



Printer
Solutions

OFFLINE MODE SYSTEM ADMINISTRATOR'S GUIDE



Avery Dennison®
Monarch®
9419 Printer

Each product and program carries a respective written warranty, the only warranty on which the customer can rely. Avery Dennison Corp. reserves the right to make changes in the product, the programs, and their availability at any time and without notice. Although Avery Dennison Corp. has made every effort to provide complete and accurate information in this manual, Avery Dennison Corp. shall not be liable for any omissions or inaccuracies. Any update will be incorporated in a later edition of this manual.

©2016 Avery Dennison Corp. All rights reserved. No part of this publication may be reproduced, transmitted, stored in a retrieval system, or translated into any language in any form by any means, without the prior written permission of Avery Dennison Corp.

Trademarks

Monarch® and MPCL are trademarks of Avery Dennison Retail Information Services LLC. Avery Dennison® is a trademark of Avery Dennison Corp.



TABLE OF CONTENTS

GETTING STARTED	1-1
Audience	1-1
Using the Control Panel.....	1-1
CONFIGURING THE PRINTER	2-1
Setting the Speed	2-2
Setting the Print Contrast	2-2
Setting the Image Rotation	2-2
Setting the Feed Mode	2-3
Setting the Cut Position.....	2-3
Setting the Supply Position.....	2-3
Setting the Print Position.....	2-4
Setting the Margin Position.....	2-4
Setting the Code Page	2-5
Setting the Country	2-6
CONFIGURING THE MEDIA	3-1
Supply Setup Information	3-1
Setting the Supply Type	3-2
Calibrating the Sensor (Manual Setup)	3-3
Sensor Locations.....	3-3
Setting the Threshold Detection	3-4
Setting the Maximum Calibration Length	3-4
Setting the Registration Length.....	3-4
Advanced Sensor Setup	3-5
SETTING COMMUNICATIONS.....	4-1
Using Serial Communications.....	4-1
Setting the Baud Rate.....	4-1
Setting the Parity.....	4-2
Setting the Data Bits.....	4-2
Setting the Stop Bits.....	4-2
Using Ethernet Communications.....	4-3
Viewing the Ethernet Settings.....	4-3
Configuring Ethernet Settings.....	4-3
Entering a Static IP Address, Subnet Mask, and Default Gateway	4-4

USING DATA ENTRY	5-1
Format 1	5-1
Format 2	5-2
Format 3	5-3
Format 4	5-5
Format 5	5-6
Format 6	5-7
Format 7	5-8
Format 8	5-9
Format 9	5-10
Transferring Files From a USB Thumb Drive	5-11
USING ADVANCED SETUP	6-1
Setting the Power-up Mode.....	6-2
Setting the Display Brightness	6-2
Setting the Date and Time	6-2
Setting the Language	6-3
Setting MLI Interpreter Options	6-4
USING DIAGNOSTICS	7-1
Printing a Test Label	7-1
Printing the Current Configuration	7-2
Using the Service Menu.....	7-3
USING THE PRINTER MANAGEMENT UTILITY	A-1
Configuring Ethernet Settings	A-1
Configuring WiFi Settings	A-3
Configuring the Printer	A-4
Transferring Files	A-5
Sending Commands	A-6
Installing a Database/Lookup Table	A-7
Using a Database/Lookup Table	A-8
Tips for Creating the Database/Lookup Table	A-8
INSTALL Command.....	A-8
Creating a Custom Menu	A-9
MENU Command	A-9
Sample Database/Lookup Table	A-11
Sample Format Using a Database/Lookup Table.....	A-12
MENU STRUCTURE	B-1

GETTING STARTED

1

The Avery Dennison® Monarch® 9419 Printer prints on thermal transfer (ribbon) and thermal direct labels or tags. The printer prints labels continuously (in one strip) or on-demand (one label at a time). You can print on die cut, black mark, or continuous (non-indexed) supplies.

The printer operates in either online or offline mode:

- | | |
|--------------|---|
| Online Mode | Use online mode when the printer receives print data from a connected host (PC or network). For online mode information, refer to the <i>Online Mode System Administrator's Guide</i> . |
| Offline Mode | Use offline mode (stand-alone mode) when the printer receives data from a keyboard or scanner. The printer is not connected to a host. The printer comes pre-loaded with nine standard formats. Custom offline formats can be loaded.

This manual contains information about using offline mode. |

Audience

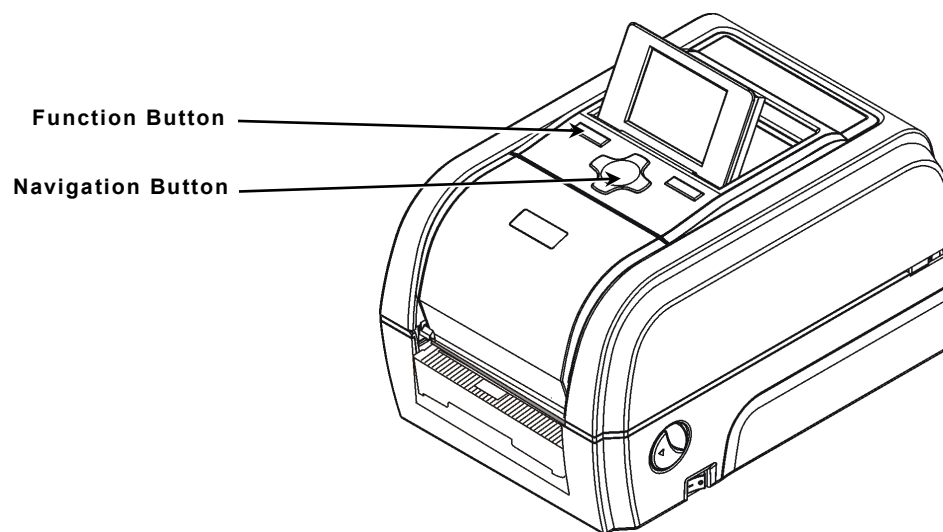
This manual is for the System Administrator who configures and updates the printer for use in offline mode.

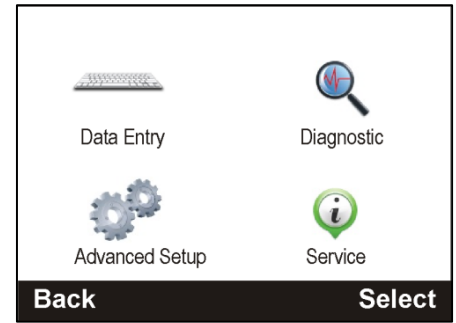
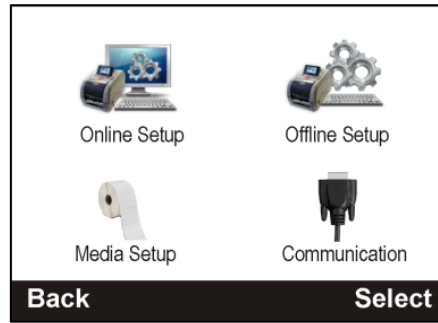
- ◆ To load supplies, print labels, or care for the printer, refer to the *Equipment Manual*.
- ◆ To create format and batch packets for printing or how to configure the printer online, refer to the *Packet Reference Manual*.

Use the Printer Management Utility to transfer files to the printer and configure the printer. See Appendix A, "[Using the Printer Management Utility](#)" for more information.

Using the Control Panel

The control panel has an LCD display with two function buttons and a navigation button.





Menu Item	Description
Online Setup	Configuring the printer for use while connected to a host. Refer to the <i>Online Mode System Administrator's Guide</i> .
Offline Setup	Configuring the printer for use in offline mode (stand-alone mode) when the printer receives data from a keyboard or scanner. See Chapter 2 " Configuring the Printer " for more information.
Media Setup	Configuring the supply type and calibrating the sensors. See Chapter 3, " Configuring the Media " for more information.
Communication	Setting up serial or Ethernet communications. See Chapter 4, " Setting Communications " for more information.
Data Entry	Select and enter data for pre-loaded formats. See Chapter 5, " Using Data Entry " for more information.
Advanced Setup	System settings such as date and time, display brightness, etc. See Chapter 6, " Using Advanced Setup " for more information.
Diagnostic	Printing a test label or the printer's configuration, viewing printer information, etc. See Chapter 7, " Using Diagnostics " for more information.
Service	Contains Service information, which requires a separate password to access.

Note: When entering data with the optional keyboard, press **Back** to return to the previous menu.

CONFIGURING THE PRINTER

This chapter explains how to select the speed, contrast, rotate image, feed mode, cut position, supply position, print position, margin position, code page, and country.



The offline setup options are listed in the table below.

Option	Choices	Default
Speed	1.5/2/3/4/5/6/7/8	5
Contrast	0 to 15	8
Rotate Image	0/1	0
Feed Mode	None/Batch Mode/Cutter Batch/Cutter Mode/ Peeler Mode	Batch Mode
Cut Position	-99 to 99 dots	0 dots
Supply Position	-149 to 300 dots (203 dpi) or -222 to 300 dots (300 dpi)	0 dots
Print Position	-99 to 99 dots	0 dots
Margin Position	-99 to 99 dots	0 dots
Code Page	USA, BRI, GER, FRE, DAN, ITA, SPA, SWE, SWI, 437, 850, 852, 860, 863, 865, 857, 861, 862, 855, 866, 737, 851, 869, 864, 1252, 1250, 1251, 1253, 1254, 1255, 1256, 1257, 1258, 8859-1, 8859-2, 8859-3, 8859-4, 8859- 5, 8859-6, 8859-7, 8859-8, 8859-9, 8859-10, 8859-15, UTF-8, 950, 936, 932, 949	850
Country	001, 002, 003, 007, 031, 032, 033, 034, 036, 038, 039, 041, 042, 044, 045, 046, 047, 048, 049, 055, 061, 351, 358	001

Setting the Speed

Select the print speed in IPS (inches per second). If print quality is important, reduce the print speed - a lower print speed increases the print quality of labels. Use premium supplies when printing at high speeds. The default setting is 5.

Select	To
1.5	Print at 1.5 IPS
2	Print at 2.0 IPS.
3	Print at 3.0 IPS
4	Print at 4.0 IPS
5	Print at 5.0 IPS
6	Print at 6.0 IPS
7	Print at 7.0 IPS
8	Print at 8.0 IPS

Note: The maximum speed using a 300 dpi printhead is 6.0 ips.
The maximum speed using peel mode is 3.0 ips.

Setting the Print Contrast

Having the correct print contrast/density setting is important because it affects bar code scan ability and printhead life. It may require adjustments based on the supply. The default is 8.

Solid black print cannot exceed 30% of any given square inch of the supply.

Select	To
Navigation button: ↑ or ↓	Increase or decrease the contrast to darken or lighten the print.

Setting the Image Rotation

Select the printout direction. The default is 0.

Select	To
0	The printout is rotated 180 degrees from the feed direction (text appears upside down).
1	The printout is the same direction as the feed direction.



Setting the Feed Mode

Set the feed mode based on your application and supply type. The default is batch mode.

Select	To
None	Tear off each label after printing.
Batch Mode	Tear off the print job after printing (tear off in strips).
Cut Every	Cut each label.
Cut Strips	Cut the print job (cuts in strips).
Peeler Mode	Separate the label from the liner when it prints (label supply must be loaded for peel mode).

Setting the Cut Position

This function adjusts where the tag is cut. The printer adjusts the cut position according to the index marks on the supply. The default is 0 dots.

Select	To
Navigation button: ← or →	Selects positive or negative and which position to change.
Navigation button: ↑ or ↓	Increase or decrease the cut position.

Setting the Supply Position

This function adjusts the position of the supply relative to the index marks in the feed direction. Adjust the supply position to compensate for supply variation. The adjustments are in dots where one dot equals 0.0049 inch. The default is 0 dots.

Select	To
Navigation button: ← or →	Selects positive or negative and which position to change
Navigation button: ↑ or ↓	Increase or decrease the supply position to move the print up or down

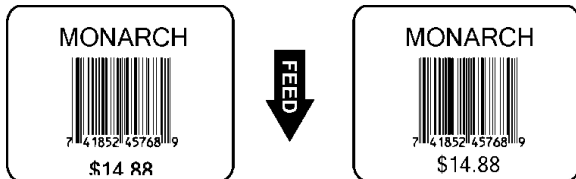
Setting the Print Position

This function adjusts the image's position on the supply in the feed direction. Adjust the print position if the print is too close to the top or bottom of the supply, or overtypes the pre-printed area. The adjustments are in dots where one dot equals 0.0049 inch. The default is 0 dots.

Print position is impacted by the Rotate Image setting, see "Setting the Image Rotation" for details on settings. Note the following when setting Print Position.

If ROTATE IMAGE = 1, then Print Position will move DOWN when set positive and UP when set negative. Margin Position will move RIGHT when set positive and LEFT when set negative. When rotate image = 1, the 0,0 is top left.

If ROTATE IMAGE = 0, then Print Position will move UP when set positive and DOWN when set negative. Margin Position will move LEFT when set positive and RIGHT when set negative. When Rotate Image = 0, the 0,0 is bottom right.



Select

Navigation button: ← or →

Navigation button: ↑ or ↓

To

Selects positive or negative and which position to change.

Increase or decrease the print position to move the print up or down.

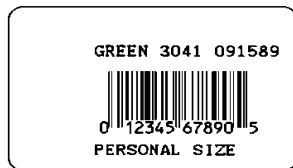
Note: Changes in the menu are overwritten if the offline format has the DIRECTION and REFERENCE commands.

Setting the Margin Position

This function adjusts where the format prints side to side on the supply. The adjustments are in dots where one dot equals 0.0049 inch. The default is 0 dots.



Print too far to the left



Print too far to the right

Select

Navigation button: ← or →

Navigation button: ↑ or ↓

To

Selects positive or negative and which position to change.

Increase or decrease the margin position to move the print left or right.

Setting the Code Page

Selects the printer's international character set. 7-bit, 8-bit, Microsoft® Windows®, or ISO code pages are available. Refer to the internet for a listing of characters in each set.

7-bit code page		8-bit code page		Windows® code page		ISO code page	
Option	Desc.	Option	Description	Option	Description	Option	Description
USA	USA	437	United States	1250	Central Europe	8859-1	Latin 1
BRI	British	737	Greek	1251	Cyrillic	8859-2	Latin 2
GER	German	850	Multilingual	1252	Latin I	8859-3	Latin 3
FRE	French	851	Greek 1	1253	Greek	8859-4	Baltic
DAN	Danish	852	Slavic	1254	Turkish	8859-5	Cyrillic
ITA	Italian	855	Cyrillic	1255	Hebrew	8859-6	Arabic
SPA	Spanish	857	Turkish	1256	Arabic	8859-7	Greek
SWE	Swedish	860	Portuguese	1257	Baltic	8859-8	Hebrew
SWI	Swiss	861	Icelandic	1258	Vietnam	8859-9	Turkish
		862	Hebrew	932	Japanese Shift-JIS	8859-10	Latin 6
		863	Canadian/French	936	Simp. Chinese GBK	8859-15	Latin 9
		864	Arabic	949	Korean		
		865	Nordic	950	Traditional Chinese Big5		
		866	Russian	UTF-8	UTF 8		
		869	Greek 2				

Setting the Country

Selects the appropriate monetary symbol to print in price fields. This is set with the print job when the print job is created and sent online to the printer.

Note: For the standard formats,
select **001** to print a \$ (dollar);
select **044** to print the £ (British pound);
select **358** to print the € (Euro).

Select	To
001	Uses the USA monetary symbol.
002	Uses the French Canadian monetary symbol.
003	Uses the Latin American Spanish monetary symbol.
031	Uses the Dutch monetary symbol.
032	Uses the Belgian monetary symbol.
033	Uses the French monetary symbol.
034	Uses the Spanish monetary symbol.
036	Uses the Hungarian monetary symbol.
038	Uses the Yugoslavian monetary symbol.
039	Uses the Italian monetary symbol.
041	Uses the Switzerland monetary symbol.
042	Uses the Slovak monetary symbol.
044	Uses the United Kingdom monetary symbol.
045	Uses the Danish monetary symbol.
046	Uses the Swedish monetary symbol.
047	Uses the Norwegian monetary symbol.
048	Uses the Polish monetary symbol.
049	Uses the German monetary symbol.
055	Uses the Brazil monetary symbol.
061	Define special characters for English (International).
351	Uses the Portuguese monetary symbol.
358	Uses the Euro symbol.

CONFIGURING THE MEDIA

This chapter explains how to select the supply type and manually calibrate the sensors.



The media setup options are listed in the table below.

Option	Choices	Default
Supply Type	Gap/Black Mark/Continuous	Gap
Manual Setup	Gap/Black Mark/Continuous	NA
Threshold Detect	Auto/Fixed	Auto
Maximum Length	1 to 10.0 inches (25mm to 254mm)	253 mm
Registration Length	On/Off	OFF
Advanced	On/Off	OFF

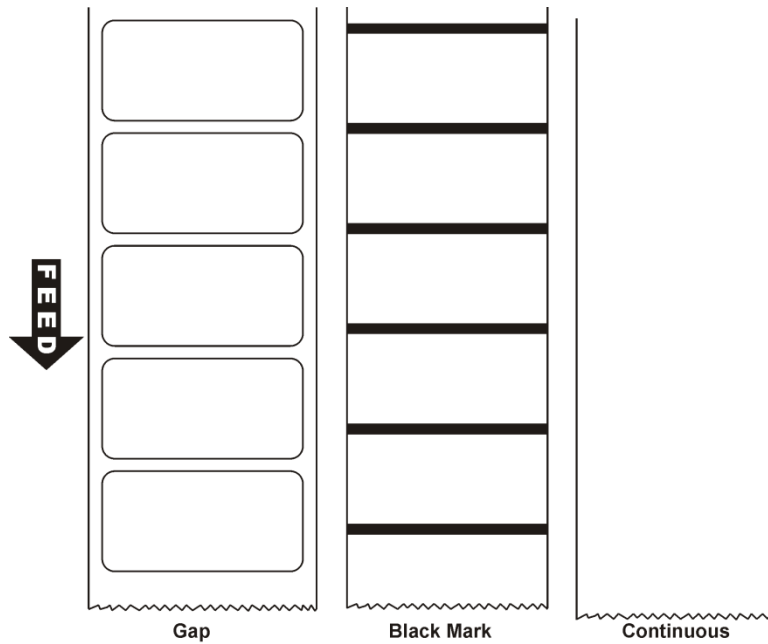
Supply Setup Information

- ◆ When using die cut 4x6 supplies, no calibration is required. The printer calibrates automatically when supply is loaded and the user presses **Feed**.
- ◆ When using pre-printed supply or tinted supply, manually calibrate the sensor.

Setting the Supply Type

Set the printer's supply type to match the loaded supplies.

Note: The printer automatically calibrates the sensor based on the selected supply type.



Select	For
Gap	Die cut supplies have a rounded edge. The supply is sensed using the gap between labels.
Black Mark	Black marks on the back of the supply for sensing. The supply is sensed using the black marks. Tag supply commonly uses black marks.
Continuous	Continuous supply does not have any index marks for sensing or perforations.

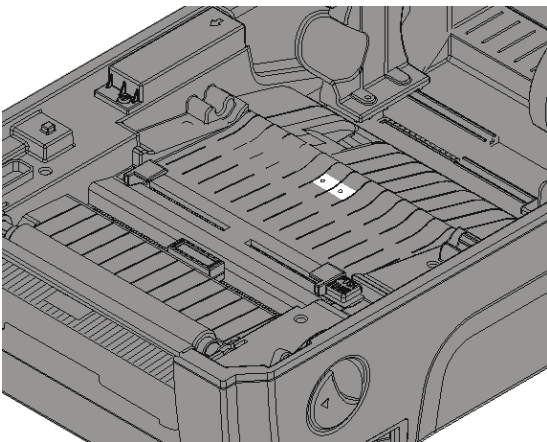
Calibrating the Sensor (Manual Setup)

When using pre-printed or tinted supply, manually calibrate the sensor.

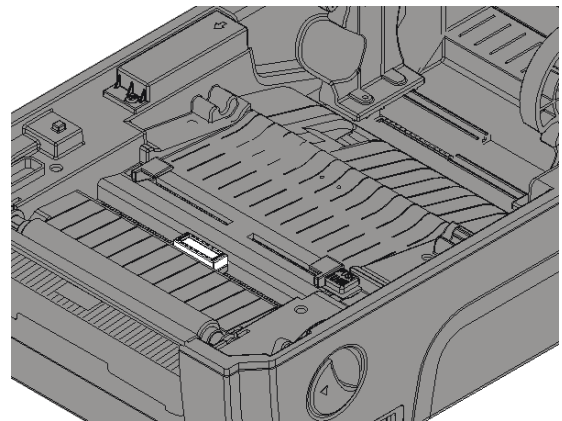
Select	For
Gap	Calibrate die cut supply: Follow instructions on screen to place backing paper over the die cut sensor. Close the cover. Press Select . Then, place label over the sensor, close the cover and press Select . A message appears with intensity and threshold readings when successful. If not, recalibrate.
Black Mark	Calibrate black mark supply: Follow instructions on screen to place a black mark over the black mark sensor. Close the cover. Press Select . Then, place label or tag (not black mark) over the sensor, close the cover and press Select . A message appears with intensity and threshold readings when successful. If not, recalibrate.
Continuous	Calibrate continuous supply: Follow instructions on screen to <i>remove supply</i> from the printer. Close the cover. Press Select . Then, place label or tag in the printer, close the cover and press Select . A message appears with intensity and threshold readings when successful. If not, recalibrate.

Sensor Locations

Note the location of the die cut and black mark sensor:



Die Cut Sensor



Black Mark Sensor

Setting the Threshold Detection

Set the sensor's threshold detection.

Select	For
Auto	Use for plain white supply.
Fixed	Use for pre-printed or tinted supply.

Setting the Maximum Calibration Length

If you experience frequent supply errors, calibrate the maximum supply length. This value is entered in millimeters. The default is 253 mm (10 inches).

Select	To
Navigation button: ← or →	Selects positive or negative and which position to change.
Navigation button: ↑ or ↓	Increase or decrease the maximum length.

Setting the Registration Length

The registration length is available using version 2.1 or greater firmware.

Enable or disable the registration length to control how the printer calibrates and/or tries to print formats when the format size differs from the loaded supply length.

Select	For
On	<p>Prints formats according to the length specified in the <i>format header</i>. Refer to the <i>Packet Reference Manual</i> for more information about creating formats. The loaded supply length must match the length in the format header or an error occurs.</p> <p>This is helpful when using one supply size, because the printer calibrates to a specific format. For example, your supply is four-inches long and a four-inch format is received by the printer. The printer prints the entire format and calibrates to four inches.</p>
Off	<p>Prints formats without reading the length from the format header. This is the default mode, which ensures compatibility with previous versions of firmware.</p> <p>The printer calibrates by looking for sense marks on the supply. It prints the data that fits on the loaded supply. For example, your supply is 2.0-inches long, but a four-inch long format is received by the printer. The printer prints only the first two inches of the format and does not error.</p> <p>This is helpful when using multiple supply sizes and multiple formats.</p>

Note: Operators should calibrate supply whenever changing the supply type or the supply size.

Advanced Sensor Setup

If you experience frequent supply errors, set the minimum supply length and the maximum gap/black mark. This value is entered in millimeters. The default is OFF.

Select	For
On	To set the minimum supply length and the maximum gap or black mark length for the sensor's auto calibration. Press Select . Use the navigation button to scroll to set the Min. Paper (minimum supply length in mm) and Max. Gap/Mark (maximum gap or black mark length).
Off	Do not set the minimum supply length and the maximum gap or black mark length for the sensor's auto calibration.

SETTING COMMUNICATIONS

This chapter tells you how to set the serial and Ethernet communication values. These values provide the link for normal online printing.

The communication settings at the printer must match the host's communication values.

Using Serial Communications



The serial communication values are in the table below.

Option	Choices	Default
Baud rate	1200/2400/4800/9600/19200/38400/57600/115200	9600 bps
Parity	None/Even/Odd	None
Data Bits	7/8	8
Stop bits	1/2	1

Note: The serial values on the printer must match those at the host.

Setting the Baud Rate

Baud rate is the speed, in bps (bits per second), at which the printer sends and receives data. The default is 9600 bps.

Select	To
1200	Communicate at 1200 bits per second.
2400	Communicate at 2400 bits per second.
4800	Communicate at 4800 bits per second.
9600	Communicate at 9600 bits per second.
19200	Communicate at 19200 bits per second.
38400	Communicate at 38400 bits per second.
57600	Communicate at 57600 bits per second.
115200	Communicate at 115200 bits per second.

Setting the Parity

Parity checks the validity of data entering the printer. The parity bit immediately follows the last data bit for a character. The parity bit is adjusted according to the parity so the data bits in the character, with the parity bit, form an odd or even number when summed.

Select	To
None	Set the parity to none (no parity check).
Odd	Set the parity to odd.
Even	Set the parity to even.

Setting the Data Bits

Data bits specify how many bits the printer uses to define a character.

Select	To
7	Set the word length to seven.
8	Set the word length to eight.

Setting the Stop Bits

A stop bit follows the data and parity bits to signal the end of a character.

Select	To
1	Set the stop bit length to one.
2	Set the stop bit length to two.

Using Ethernet Communications

The printer communicates on a 10baseT or 100baseTX wired Ethernet connection.



The Ethernet options are listed in the table below.

Option	Choices	Default
Status	View only	None – view only
Configure	DHCP/Static IP	DHCP

Use the Printer Management Utility to configure the Ethernet settings. See “[Configuring Ethernet Settings](#)” for more information.

Viewing the Ethernet Settings

Select Status from the Ethernet menu to view the current Ethernet settings.

The viewable Ethernet settings include MAC Address, IP Address, Subnet Mask, and Default Gateway. The Media Access Control (MAC) Address is a hard-coded value that cannot be changed (like a serial number).

Configuring Ethernet Settings

1. Select Configure from the Ethernet menu to change the Ethernet settings.
2. Select either DHCP or Static:

Static Use if your network uses a fixed configuration. The IP address remains the same every time the device connects to the network. For static, you must set an IP Address, Subnet Mask, and Default Gateway. See “[Entering a Static IP Address, Subnet Mask and Default Gateway](#)” for more information.

DHCP The network automatically assigns an IP address within a specified range to a device when it is first turned on. A device could have a different IP address every time it connects to the network.

3. Select **Yes** to save the DHCP setting. The printer reboots and establishes a connection. Or, press **No** to exit without saving.

Entering a Static IP Address, Subnet Mask, and Default Gateway

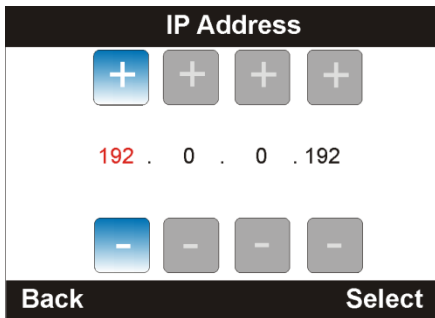
The IP (Internet Protocol) address is a unique identifier for a device on a network. It consists of four 3-digit numeric fields, separated by periods.

IP networks are divided using subnet masks. The subnet mask address determines where the IP address belongs in the network. It consists of four 3-digit numeric fields.

The default gateway (or router) allows connections (communications) between different subnets on a network. It consists of four 3-digit numeric fields.

To set the *static* IP Address, Subnet Mask and Default Gateway:

1. Use the buttons as shown below:



Select

Navigation button: ← or →

Navigation button: ↑ or ↓

To

Selects which position to change.

Increase or decrease the number.

2. Press **Select** when finished entering the IP Address, Subnet Mask, and Default Gateway.
3. Press **Yes** to save the settings. The printer reboots and establishes a connection. Or, press **No** to exit without saving.

USING DATA ENTRY

This chapter shows samples of the nine standard formats and how to enter data for them.

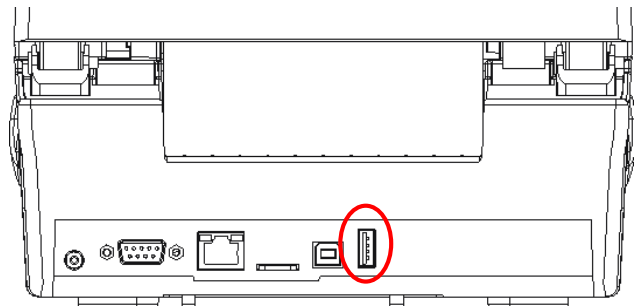
See “[Installing a Database/Lookup Table](#)” in Appendix A to install and use a database/lookup table on the printer.

Data Entry requires an optional keyboard and/or scanner.

The printer comes pre-loaded with nine standard formats.

1. Connect a keyboard or scanner to the printer.
2. From the main menu, select **Data Entry**, then select **Standard Formats**. The list of installed formats appears:

Standard Formats	
▶ Format_1.BAS	983 Bytes
▶ Format_2.BAS	1.45KB
▶ Format_3.BAS	5.53KB
▶ Format_4.BAS	3.02KB
Back	Select



3. Select the format and enter data as necessary. After a quantity is entered, the labels print.

Note: Formats contain the USA (\$) dollar sign, the British pound (£), or the Euro (€) symbol in the price field. Set the currency symbol by selecting the Country. See “[Setting the Country](#)” for more information.

When entering data, press **Back** at any time to return to the previous menu.

Format 1

Prints 1.5” wide x 1.0” long (38mm x 25mm) labels.



Enter the following information for each field:

Field	Description
<i>11 digit barcode</i>	Enter 11 alphanumeric characters for the UPCA barcode.
<i>Description</i>	Enter up to 20 characters.
<i>Price</i>	Enter up to 10 alphanumeric characters. The monetary symbol prints automatically (it does not have to be entered). If you enter 98, the price prints as \$98, not \$0.98.
<i>Quantity</i>	Enter the quantity of labels to print. 1 to 999.

Format 2

Prints 1.2" wide x 1.0" long (30mm x 25mm) labels.

Description 1
Description 2
Description 3
\$Price
SKU

Enter the following information for each field:

Field	Description
<i>Description 1</i>	Enter up to 12 characters.
<i>Description 2</i>	Enter up to 12 characters.
<i>Description 3</i>	Enter up to 12 characters.
<i>SKU</i>	Enter up to 10 characters.
<i>Price</i>	Enter up to 10 alphanumeric characters. The monetary symbol prints automatically (it does not have to be entered). If you enter 98, the price prints as \$98, not \$0.98.
<i>Quantity</i>	Enter the quantity of labels to print. 1 to 999.



Note: When entering data, press **Back** at any time to return to the previous menu.

Format 3

Prints 4.0" wide x 6.0" long (101mm x 152mm) labels. This format prints Code 128 barcodes.

Enter the following information for each field:

Field	Description
<i>From Name</i>	Enter up to 20 alphanumeric characters for the Sender's name.
<i>From street addr</i>	Enter up to 20 alphanumeric characters for the Sender's street address.
<i>From City</i>	Enter up to 20 alphanumeric characters for the Sender's city.
<i>From State Zip</i>	Enter up to 7 alphanumeric characters for the Sender's state and zip.
<i>To Name</i>	Enter up to 20 alphanumeric characters for the Recipient's address.
<i>To street addr</i>	Enter up to 20 alphanumeric characters for the Recipient's street address.
<i>To street line2</i>	Enter up to 20 alphanumeric characters for the Recipient's address.
<i>To City</i>	Enter up to 20 alphanumeric characters for the Recipient's address.
<i>To State Zip</i>	Enter up to 7 alphanumeric characters for the state (2 letters) and zip code (5 digits).
<i>Ship2Post</i>	Enter exactly 2 digits for the ship to postal code.
<i>Carrier</i>	Enter up to 15 alphanumeric characters for the carrier's name.
<i>PRO</i>	Enter up to 15 alphanumeric characters for the product's order
<i>Bill of Lading</i>	Enter up to 15 alphanumeric characters for the bill of lading
<i>PO number</i>	Enter up to 12 alphanumeric characters for the purchase order number
<i>Dept number</i>	Enter up to 12 alphanumeric characters for the department number.
<i>Store Number</i>	Enter up to 8 alphanumeric characters for the store number.
<i>Customer Store</i>	Enter up to 4 numeric characters for the store number.

From From Name (sender) From Street Addr From City From State Zip	To To Name (recipient) To Street Addr To Street line2 To City To State Zip
SHIP TO POST  Ship2Post	CARRIER Carrier PRO: PRO B/L: Bill of lading
PO: PO number DEPT: Dept number	
Store Number Store Number 	Customer Store: CS# Store Address Store City Store State Zip
SSCC: SSCC Number 	

Format 3 (Continued)

Field	Description
<i>Store address</i>	Enter up to 15 alphanumeric characters for the store's address.
<i>Store city</i>	Enter up to 15 alphanumeric characters for the store's city.
<i>Store State Zip</i>	Enter up to 15 alphanumeric characters for the state and zip code.
<i>SSCC number</i>	Enter up to 18 alphanumeric characters.
<i>Quantity</i>	Enter the quantity of labels to print. 1 to 999.



Note: When entering data, press **Back** at any time to return to the previous menu.

Format 4

Prints 4.0" wide x 6.0" long (101mm x 152mm) labels. This format prints Code 128 barcodes.

Enter the following information for each field:

Field	Description
<i>From Name</i>	Enter up to 20 alphanumeric characters for the Sender's address.
<i>From street addr</i>	Enter up to 20 alphanumeric characters for the Sender's address.
<i>From City</i>	Enter up to 20 alphanumeric characters for the Sender's address.
<i>From State Zip</i>	Enter up to 20 alphanumeric characters for the Sender's address.
<i>To name</i>	Enter up to 20 alphanumeric characters for the Recipient's address.
<i>To street addr</i>	Enter up to 20 alphanumeric characters for the Recipient's address.
<i>To City</i>	Enter up to 20 alphanumeric characters for the Recipient's address.
<i>To State Zip</i>	Enter up to 20 alphanumeric characters for the state and zip code.
<i>SSCC number</i>	Enter up to 18 alphanumeric characters.
<i>GTIN</i>	Enter up to 13 alphanumeric characters for the GTIN.
<i>Batch/Lot</i>	Enter up to 13 alphanumeric characters for the batch and/or lot number.
<i>Quantity</i>	Enter the quantity of labels to print. 1 to 999.

From	To
From Name (sender)	To Name (recipient)
From Street Addr	To Street Addr
From City	To City
From State Zip	To State Zip
SSCC: SSCC number	
GTIN: GTIN	
Batch/Lot: Batch/Lot	
 GTIN	
 SSCC	

Note: When entering data, press **Back** at any time to return to the previous menu.

Format 5

Prints 1.5" wide x 2.75" long (38mm x 69mm) labels.

Enter the following information for each field:

Store Code
Description 1
Description 2
Description 3

Size
\$Price

Field	Description
<i>Store Code</i>	Enter up to 10 alphanumeric characters
<i>Description 1</i>	Enter up to 15 alphanumeric characters.
<i>Description 2</i>	Enter up to 15 alphanumeric characters.
<i>Description 3</i>	Enter up to 15 alphanumeric characters.
<i>11 digit Barcode</i>	Enter 11 alphanumeric characters for the UPCA barcode.
<i>Size</i>	Enter up to 11 alphanumeric characters
<i>Price</i>	Enter up to 6 alphanumeric characters. The monetary symbol prints automatically (it does not have to be entered). If you enter 98, the price prints as \$98, not \$0.98.
<i>Quantity</i>	Enter the quantity of labels to print. 1 to 999.

Note: When entering data, press **Back** at any time to return to the previous menu.

Format 6

Prints 1.5" wide x 1.0" long (38mm x 25mm) labels.



Enter the following information for each field:

Field	Description
<i>Description</i>	Enter up to 20 alphanumeric characters.
<i>Price</i>	Enter up to 8 alphanumeric characters. The monetary symbol prints automatically (it does not have to be entered). If you enter 98, the price prints as \$98, not \$0.98.
<i>11 digit Barcode</i>	Enter 11 alphanumeric characters for the UPCA barcode.
<i>Quantity</i>	Enter the quantity of labels to print. 1 to 999.

Note: When entering data, press **Back** at any time to return to the previous menu.

Format 7

Prints 3.0" wide x 1.0" long (76 x 25mm) labels.

Enter the following information for each field:

Description

\$Price



Field	Description
<i>Description</i>	Enter up to 30 alphanumeric characters.
<i>11 digit Barcode</i>	Enter 11 alphanumeric characters for the UPCA barcode.
<i>Price</i>	Enter up to 7 alphanumeric characters. The monetary symbol prints automatically (it does not have to be entered). If you enter 98, the price prints as \$98, not \$0.98.
<i>Quantity</i>	Enter the quantity of labels to print. 1 to 999.

Note: When entering data, press **Back** at any time to return to the previous menu.

Format 8

Prints 1.2" wide x 1.0" long (30mm x 25mm) labels.

\$Price

Enter the following information for each field:

Field	Description
<i>Price</i>	Enter up to 7 alphanumeric characters. The monetary symbol prints automatically (it does not have to be entered). If you enter 98, the price prints as \$98, not \$0.98.
<i>Quantity</i>	Enter the quantity of labels to print. 1 to 999.

Note: When entering data, press **Back** at any time to return to the previous menu.

Format 9

Prints 1.2" wide x 1.0" long (30mm x 25mm) labels.

Was
\$Price
Now
\$Price

Enter the following information for each field:

Field	Description
<i>Was Price</i>	Enter up to 7 alphanumeric characters. The monetary symbol prints automatically (it does not have to be entered). If you enter 98, the price prints as \$98, not \$0.98.
<i>Now Price</i>	Enter up to 6 alphanumeric characters. The monetary symbol prints automatically (it does not have to be entered). If you enter 98, the price prints as \$98, not \$0.98.
<i>Quantity</i>	Enter the quantity of labels to print. 1 to 999.

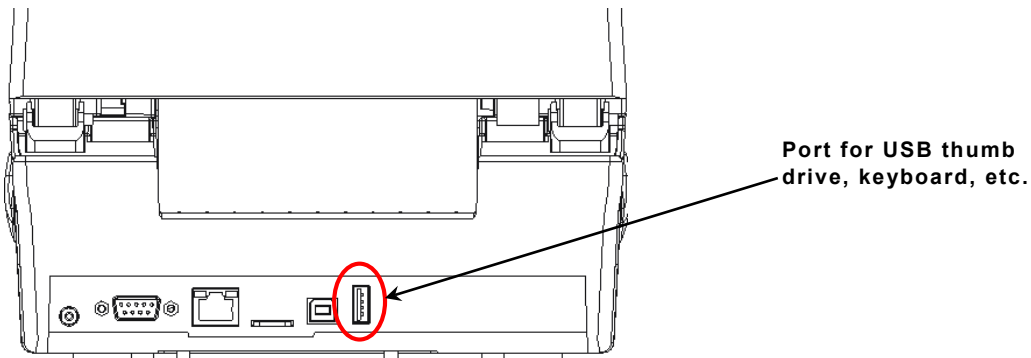
Note: When entering data, press **Back** at any time to return to the previous menu.

Transferring Files From a USB Thumb Drive

You can transfer files from a USB thumb drive to the printer.

Save the files to transfer on the root of a USB thumb drive.

1. Insert a USB thumb drive into the printer.



2. Turn on the printer.
3. From the main menu, select **Data Entry**.

Data Entry	
Custom Formats	78 MB Free
USB	14 BG Free
Standard Formats	>
Back	Select

4. Select USB.
5. Scroll to highlight your file, for example, Custom_3.bas. Then, press **Select**. The printer beeps.
6. Turn off the printer.
7. Unplug the USB thumb drive.
8. Connect a keyboard.
9. Turn on the printer.

10. Press **F2** on the keyboard. You see the Custom Formats screen. Select the .bas file you transferred, for example Custom_3.bas.

Custom Formats	
▶ Custom_1.BAS	719 Bytes
▶ Custom_2.BAS	1.81KB
▶ Custom_3.BAS	7.52KB
▶ Custom_4.BAS	9.46KB
Back	Select

11. Press **Enter** on the keyboard.
12. Follow the prompts as necessary. Your labels print.
13. Press **ESC** on the keyboard to return to the printer's Main Menu.

USING ADVANCED SETUP

This chapter explains how to select the power-up mode, display brightness, date, time, language, and MLI interpreter options.



The advanced setup options are listed in the table below.

Option	Choices	Default
Power-up Mode	Online/Offline	Online
Display Brightness	0 to 100	50
Date & Time	Date Time	
Language	English, Traditional Chinese, Simplified Chinese, Japanese, Korean, German, Dutch, French, Italian, Spanish, Portuguese, Swedish, Norwegian, Danish, Finnish, Polish, Czech, Slovak, Hungarian, Slovenian, Croatian, Russian, Ukrainian, Bulgarian, Kazakh, Greek, Turkish, Lithuanian, Canadian French, Latin American Spanish, and Brazilian Portuguese	English
MLI Interpreter	See “ Setting MLI Interpreter Options ” for more information.	N/A

Use the Printer Management Utility to make advanced settings. See Appendix A, “[Using the Printer Management Utility](#)” for more information.

Setting the Power-up Mode

Power-up mode lets you decide how your printer starts each time you turn it on. The default is online.

- ◆ Ready to receive data and start printing (online mode).
- ◆ Operator can select a format to print (offline mode).
- ◆ Operator can enter data for a selected format using the optional keyboard.

Select	To
Online	When the printer is turned on, you see the main screen.
Offline	When the printer is turned on, you see Data Entry mode. Make sure formats are loaded and a keyboard is connected if you need to enter data. Press Back , then Menu and Advanced Setup to change this mode.

Setting the Display Brightness

Adjust the screen's brightness for better visibility. The default is 50.

Select	To
Navigation button: ↑ or ↓	Increase or decrease the screen's brightness for better visibility.

Setting the Date and Time

The printer contains a real-time clock. Set the clock during initial printer setup. The printer keeps track of the date and time even when the printer is turned off. The clock does not adjust for daylight saving time.

Select	To
Navigation button: ← or →	Select which position to change. Year, Month, Day Hours, Minutes, Seconds Note: The clock operates on 24-hour time. For example, setting the hours to 16 indicates 4:00 PM.
Navigation button: ↑ or ↓	Increase or decrease the date and time as needed.

Setting the Language

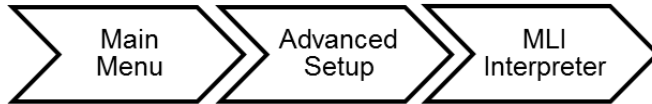
The printer can display prompts in different languages:

Language	Language
English	Čeština (Czech)
繁體中文 (Traditional Chinese)	Slovenčina (Slovak)
简体中文 (Simplified Chinese)	Magyar (Hungarian)
日本語 (Japanese)	Slovenščina (Slovenian)
한국어 (Korean)	Hrvatski (Croatian)
Deutsch (German)	Русский (Russian)
Nederlands (Dutch)	Український (Ukrainian)
Français (French)	български (Bulgarian)
Italiano (Italian)	Қазақша (Kazakh)
Español (Spanish)	Ελληνικά (Greek)
Português (European Portuguese)	Türkçe (Turkish)
Svenska (Swedish)	Lietuvių (Lithuanian)
Norsk (Norwegian)	Français du Canada (Canadian French)
Dansk (Danish)	Español (Latin American Spanish)
Suomi (Finnish)	Português Brasil (Brazilian Portuguese)
Polski (Polish)	

Note: Some prompts may remain in English, even if you select a different language.

Setting MLI Interpreter Options

Avery Dennison's MONARCH LANGUAGE INTERPRETER™ (MLI™) and the Avery Dennison 9419 printer are set up for use with ZIH Corp.'s ZPL II®. If you have any questions about using the 9419 printer with these data streams, please contact your Avery Dennison representative.



The MLI interpreter options are listed in the table below.

Option	Choices/Description	Default
Darkness	0 to 30 Adjusts darkness of print	16
Print Speed	2 to 6 Sets the print speed	4 ips
Tear Off	+/- 0 to 9 Sets the media stopping point for easy tear off	0 dot
Print Mode	Tear Off/Peeler Off/Cutter	Tear Off
Print Width	0 to 9 Sets the print width	812 dot
List Fonts	Prints list of printer fonts	NA
List Images	Prints list of printer images	NA
List Formats	Prints list of printer formats	NA
List Setup	Prints current printer configuration	NA
Control Prefix	Sets control prefix character	7E ~
Format Prefix	Sets format prefix character	5E ^
Delimiter Char	Sets the delimiter character	2C ,
Media Power Up	Feed/Calibration/Length/ No Motion Sets media action	No Motion

Option	Choices/Description	Default
Head Close	Feed/Calibration/Length/ No Motion Sets media action when printhead is closed	No Motion
Label Top	-120 to 120 adjusts print position vertically	0 dot
Left Position	-9999 to 9999 adjusts print position horizontally	0
Reprint Mode	Enable/Disable Reprint last label by pressing ↑ “up” button	Disable
Format Convert	Sets bitmap scaling factor in dpi; first number is the original dpi; second number is desired dpi	None

USING DIAGNOSTICS

This chapter explains how to print a test label and the printer's configuration and view the printer's information.



The Diagnostic options are listed in the table below.

Option	Choices
Test Label	NA
Print Config	NA
Printer Information	View the printer's serial number, mileage (meters printed), labels printed, and the number of cuts.
Contact Us	View our Web site address.

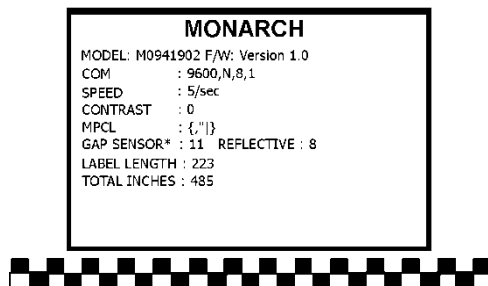
Printing a Test Label

The test labels represent the printer's ONLINE mode settings.

From the Main Menu select **Diagnostic**, then **Test Label**. Three test labels print:

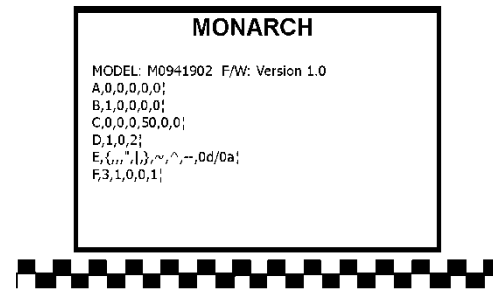
Printer Information

Contains generic information, including speed, contrast, and inch counts.



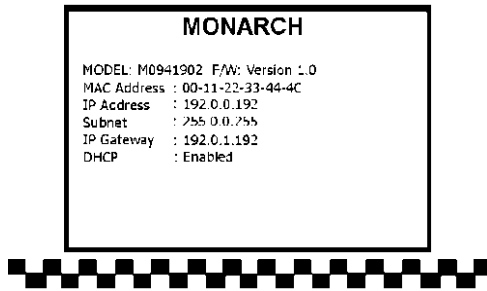
MPCL Label

Contains the printer's MPCL packet configuration. Refer to the *Packet Reference Manual* for more information.



Network Configuration

Contains the printer's network/Ethernet configuration.



Printing the Current Configuration

The printed labels represent printer's OFFLINE mode settings and configuration.

```
-----  
SYSTEM INFORMATION  
-----  
MODEL: M0941902  
FIRMWARE: 4.06 MLI  
CHECKSUM: 0C344522  
S/N: TX215310078  
TCF: NO  
DATE: 2016/05/13  
TIME: 09:15:03  
NON-RESET: 6 m (TPH)  
RESET: 6 m (TPH)  
NON-RESET: 0 m (CUT)  
RESET: 0 m (CUT)  
-----  
PRINTING SETTING  
-----  
SPEED: 2 IPS  
DENSITY: 8.0  
WIDTH: 4.00 INCH  
HEIGHT: 2.00 INCH  
GAP: 0.14 INCH  
INTENSION: 10  
CODEPAGE: 850  
COUNTRY: 001  
-----  
Z SETTING  
-----  
DARKNESS: 16.0  
SPEED: 4 IPS  
WIDTH: 4.00 INCH  
TILDE: 7EH (~)  
CARET: 5EH (^)  
DELIMITER: 2CH (,)  
POWER UP: NO MOTION  
HEAD CLOSE: NO MOTION  
-----  
RS232 SETTING  
-----  
BAUD: 9600  
PARITY: NONE  
DATA BIT: 8  
STOP BIT: 1  
-----
```

```

-----
ETHERNET SETTING
-----
NAME: PRINTER1
MAC ADDR: 001B82-8001AB
DHCP: ON
IP ADDR: 192.0.192.0
SUBNET: 255.255.0.0
GATEWAY: 192.0.0.0
PORT: 9100
-----

WLAN SETTING
-----
MAC ADDR: 00-00-00-00-00-00-00
WIFI REGION: US
MODE: INFRASTRUCTURE
SSID:
DHCP: OFF
IP ADDR: 0.0.0.0
SUBNET: 0.0.0.0
GATEWAY: 0.0.0.0
PORT: 0
-----

DRAM FILE (0 FILES)
-----
PHYSICAL 128 MBYTES
AVAILABLE 8192 KBYTES
-----

FLASH FILE (2 FILES)
-----
LABEL_01 183 BYTES
LABEL_02 259 BYTES
PHYSICAL 128 MBYTES
AVAILABLE 80758 KBYTES
-----

SYSTEM FILE (3 FILES)
TEST.CSV 2421 BYTES
SAMPLE01.BAS 1292 BYTES
SAMPLE02.BAS 1495 BYTES
-----

```

Using the Service Menu

The Service Diagnostics menu can only be accessed by a Service Representative; it requires a separate password.



USING THE PRINTER MANAGEMENT UTILITY



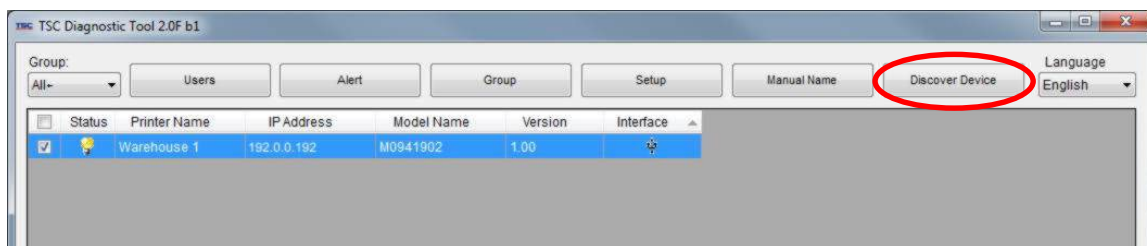
Download the Printer Management Utility from our Web site. Use the Printer Management Utility to

- ◆ change basic or advanced printer settings, including changing the print speed or code page.
- ◆ set the printer's clock (year, date and time).
- ◆ send commands
- ◆ print test or configuration pages
- ◆ reset or calibrate the printer.
- ◆ download fonts to the printer.

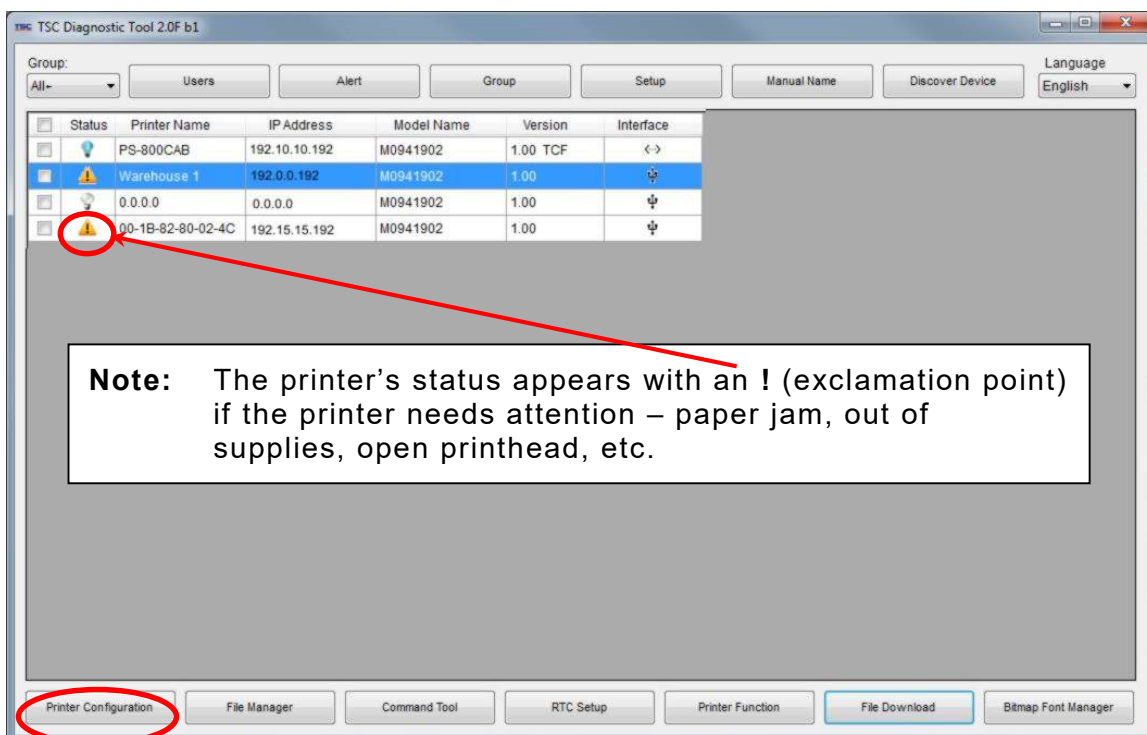
Configuring Ethernet Settings

Configure Ethernet settings with the Printer Management Utility:

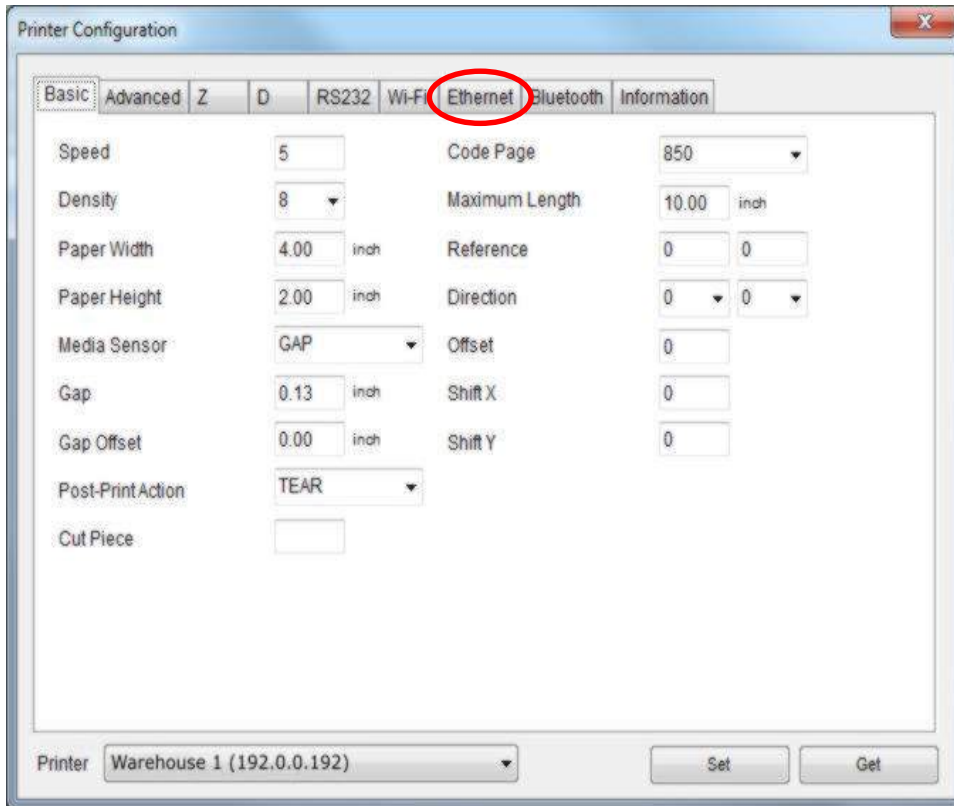
1. Connect the printer to your computer and turn on the printer.
2. Double click on the Printer Management Utility icon to open it.
The main screen shows a list of printers connected to the computer.



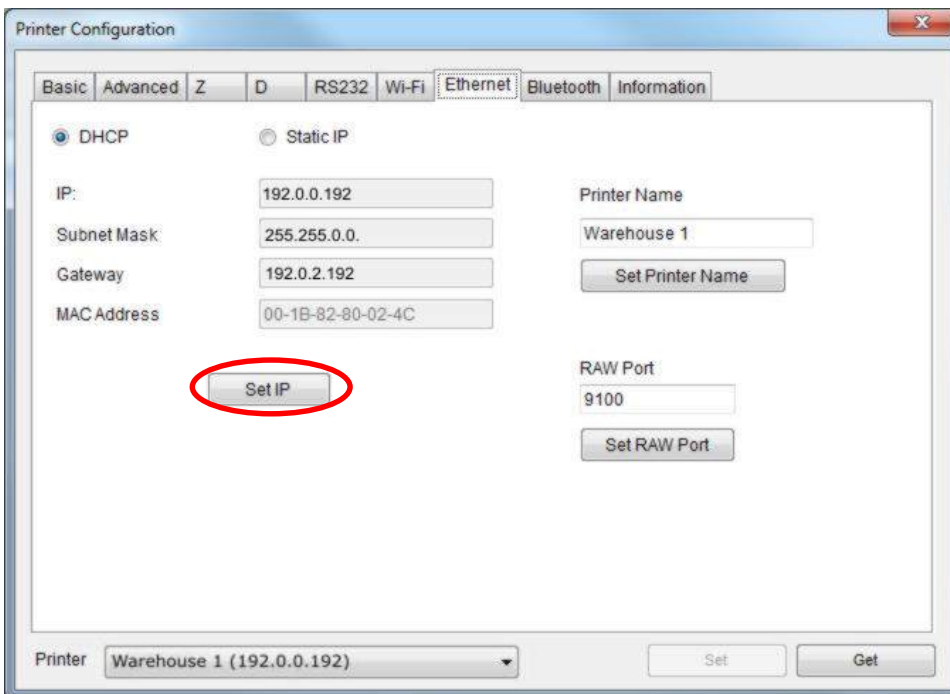
3. Click **Discover Device** to show printer(s) on the network via Ethernet.



4. Select a printer to configure.
5. Click **Printer Configuration**.
6. Click **Ethernet** then press **Feed** on the printer.



7. Select Static or DHCP. For Static, enter the IP, Subnet Mask, and Default Gateway.



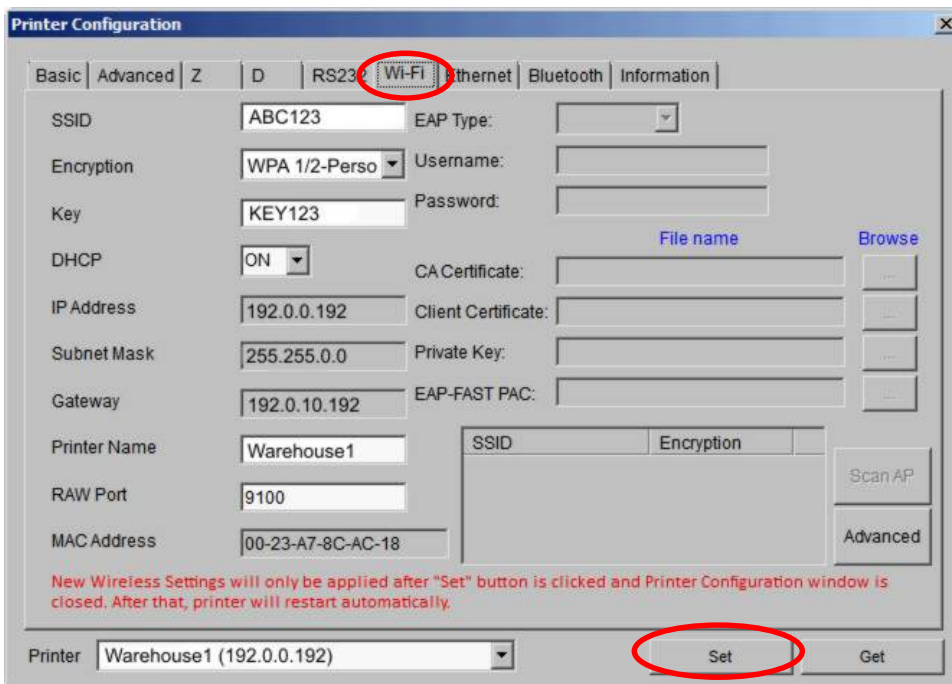
8. Press **Set IP** when finished. The printer reboots and establishes a connection.

Configuring WiFi Settings

A web browser is also available to configure WiFi. Enter the printer's IP address into a Web browser. The website appears for the *Wifi card's* manufacturer. Enter the network specific information for SSID, Encryption, etc.

To configure WiFi using the Printer Management Utility:

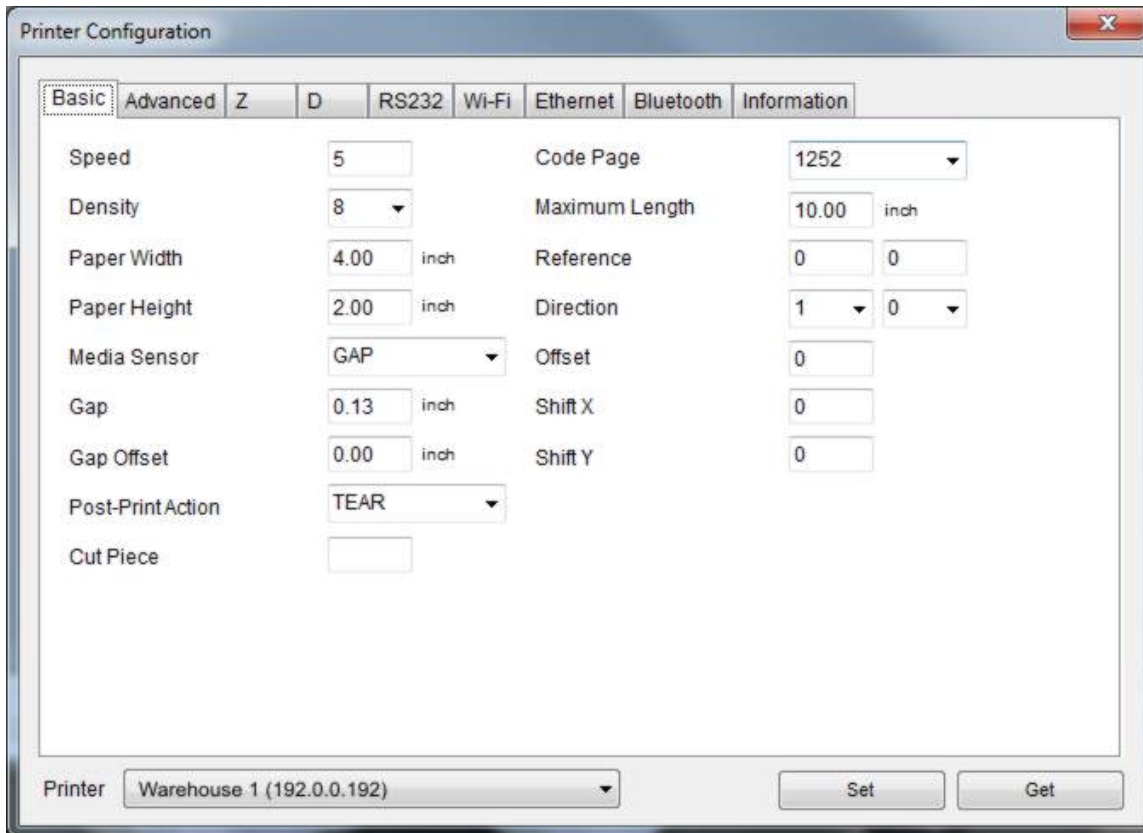
1. Connect the printer to your computer and turn on the printer.
2. Double click on the Printer Management Utility icon to open it.
The main screen shows a list of printers connected to the computer.
3. Select a printer to configure.
4. Click **Printer Configuration**.
5. Click **Wi-Fi**.



6. Enter your network specific information for SSID, Encryption, etc.
7. Press **Set** when finished.
8. Close the Printer Configuration window. The printer reboots and establishes a wireless connection.

Configuring the Printer

1. From the main Printer Management Utility screen, click **Printer Configuration**.



The screenshot shows the 'Printer Configuration' dialog box with the following settings:

Setting	Value
Speed	5
Density	8
Paper Width	4.00 inch
Paper Height	2.00 inch
Media Sensor	GAP
Gap	0.13 inch
Gap Offset	0.00 inch
Post-Print Action	TEAR
Cut Piece	<input type="checkbox"/>
Code Page	1252
Maximum Length	10.00 inch
Reference	0 0
Direction	1 0
Offset	0
Shift X	0
Shift Y	0

Printer: Warehouse 1 (192.0.0.192)

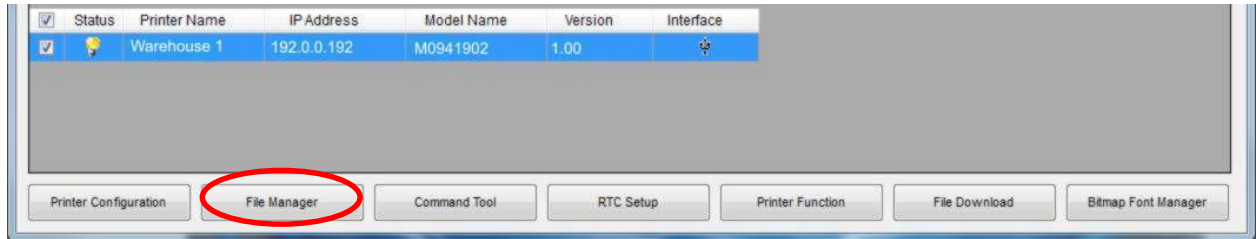
Buttons: Set, Get

2. Make any changes required and click **Set**.

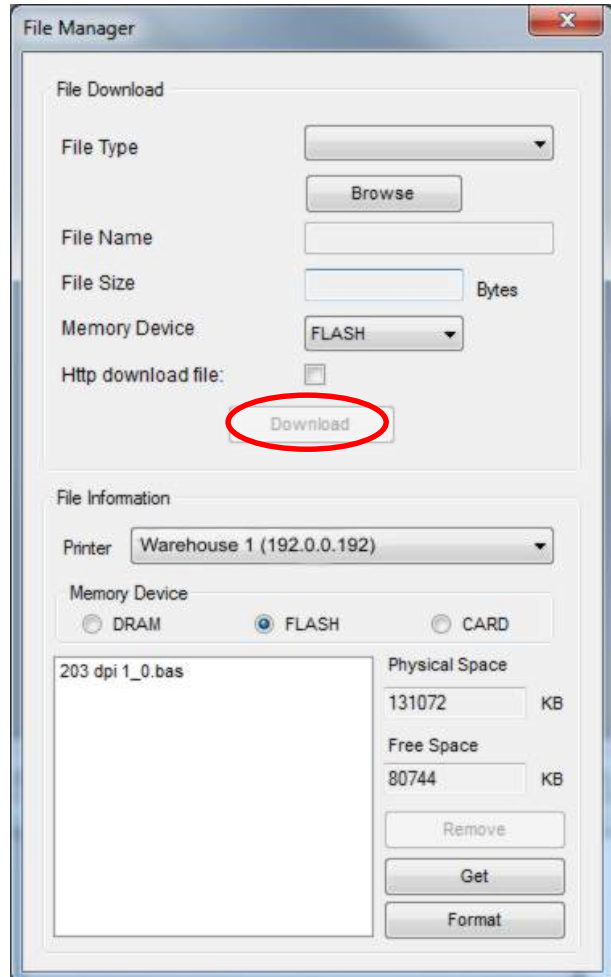
Transferring Files

To transfer graphics/fonts/firmware files to the printer:

1. Connect the printer to your computer and turn on the printer.
2. Double click on the Printer Management Utility icon to open it.



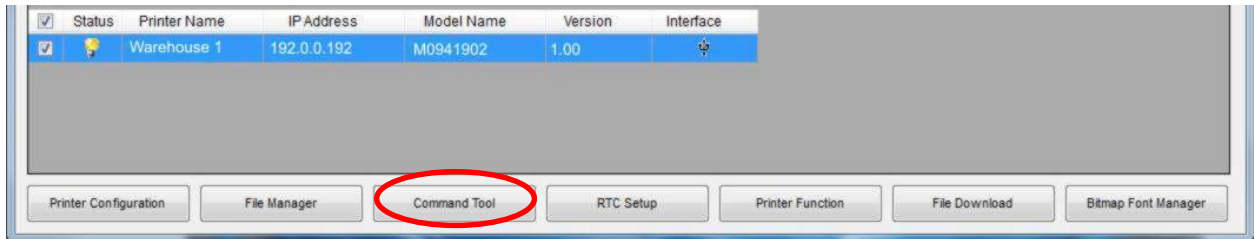
3. Select the printer.
4. Click **File Manager**.
5. Select the File Type to download: BMP, PCX, TrueType font, Bitmap font, Firmware file, etc.
6. Click **Browse** to navigate to the file.
7. Click **Open**.
8. Click **Download** to send the file to the printer.



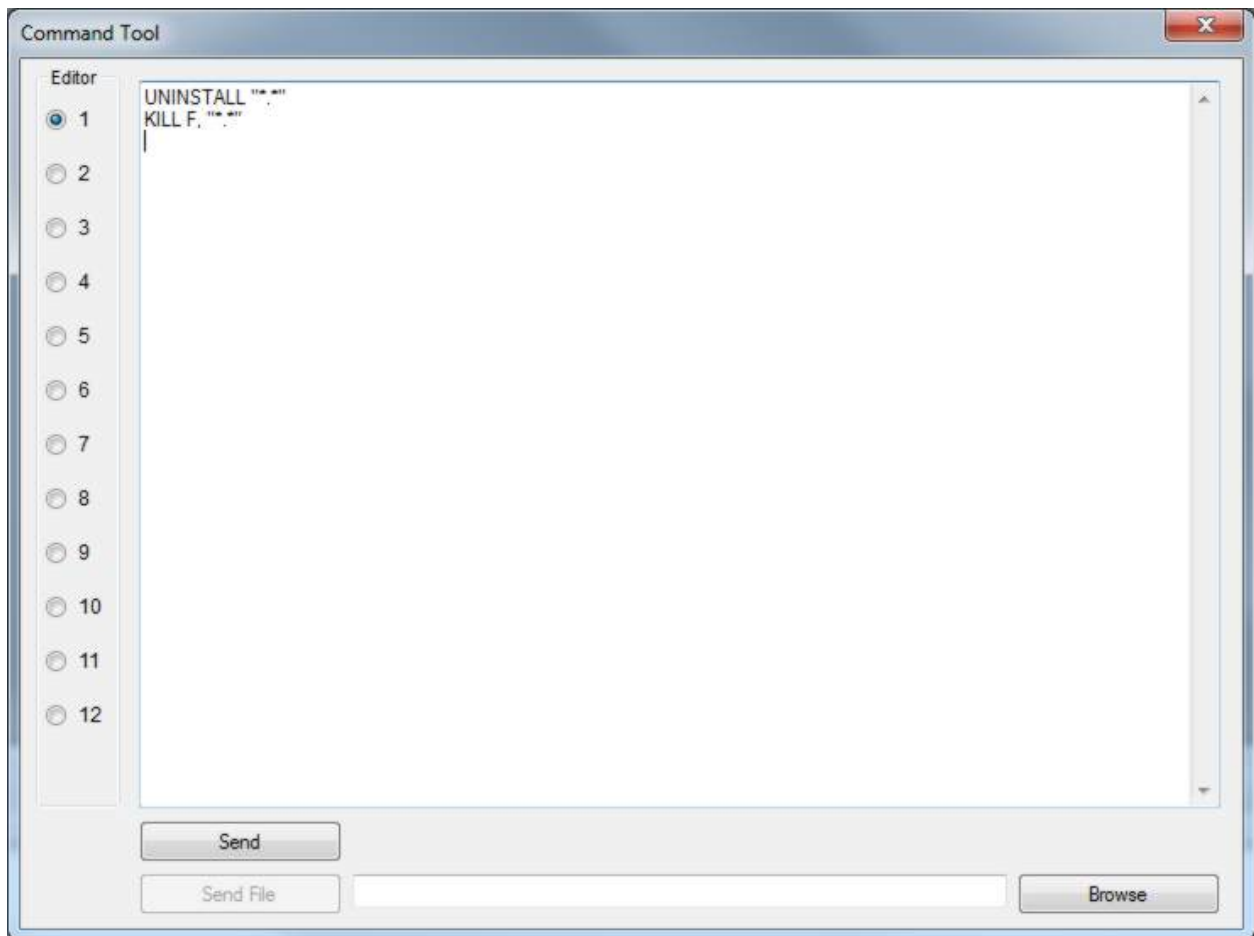
Sending Commands

To send command to the printer:

1. Connect the printer to your computer and turn on the printer.
2. Double click on the Printer Management Utility icon to open it.



3. Select the printer.
4. Click **Command Tool**.



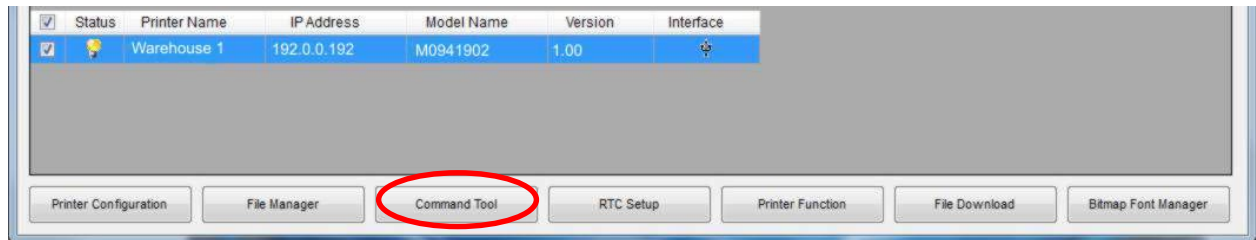
5. Enter the command and click **Send**. For example, to clear formats, fonts, or graphics, type **UNINSTALL *.*** and **KILL F, *.*** then click **Send**.
6. Resend the formats, fonts, or graphics.

Installing a Database/Lookup Table

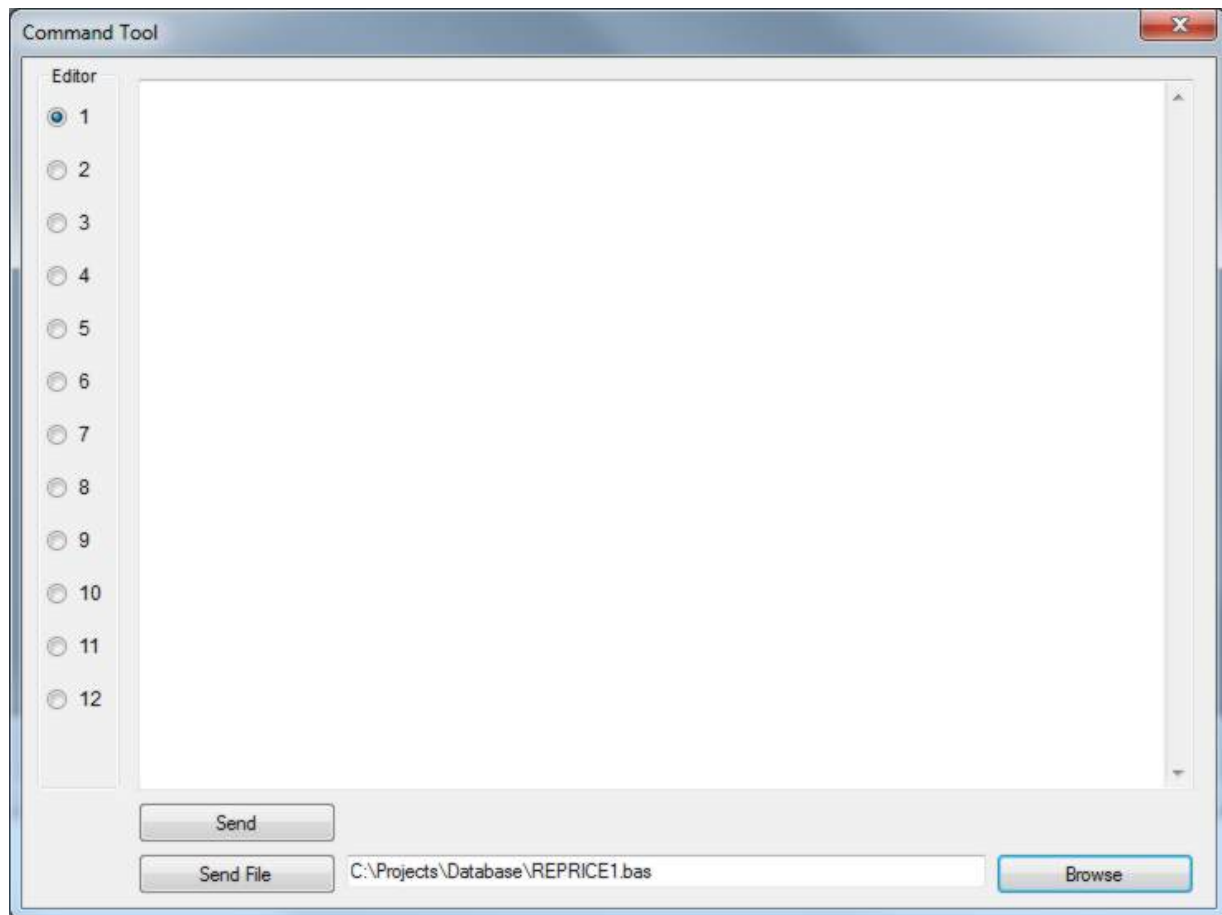
Use the Printer Management Utility to send the database/lookup table and a format that uses the database to look up and print a price.

The printer accepts a database file in .CSV or .TXT format. The format using the database must have a .BAS extension.

1. Connect the printer to your computer and turn on the printer.
2. Double click on the Printer Management Utility icon to open it.



3. Select the printer.
4. Click **Command Tool**.



5. Click **Browse** to navigate to your files. Select the file and click **Open**. Click **Send File**. Send the format file, for example REPRICE1.bas. Repeat for each file to send.

Note: If your database file is small, you can copy and paste it into the Command Tool, then click **Send**.

The database/lookup table and format are sent to the printer.

6. Exit the Printer Management Utility.

Using a Database/Lookup Table

The database/lookup table installs with the Standard Formats.

1. Connect a keyboard or scanner to the printer.
2. From the main menu, select **Data Entry**, then select **Standard Formats**.
The list of installed formats appears. Scroll to select the format that uses the database, for example REPRICE1.bas.

Standard Formats	
▶ Format_7.BAS	983 Bytes
▶ Format_8.BAS	1.45KB
▶ Format_9.BAS	5.53KB
▶ REPRICE1.BAS	3.02KB
Back	Select

3. Select the format and follow the prompts to enter data. For example, scan a barcode or enter bar code data with the keyboard. If the barcode data is found in the database, the markup down price prints.

Tips for Creating the Database/Lookup Table

- ◆ The file must be saved as a comma separated text file.
- ◆ To edit the comma separated file, we recommend Notepad++ which is a free download.
- ◆ The comma separated file must match the format shown on the following page.

INSTALL Command

Use the install command to save a file into the printer's flash memory.

Syntax HEADER "filename ",DataSize,Content

<i>HEADER</i>	Use INSTALL to load a file into the printer's flash memory. The file appears in Data Entry, Standard Formats for use.
<i>"filename"</i>	The name of the file. The filename is case sensitive and must be enclosed within quotation marks ("").
<i>DataSize</i>	The file's byte size file without the Header. The Header includes INSTALL , "filename.csv" , DataSize and EOP (End of Program/End of Header). Include EOP at the end of the file. For example 2200 the file's byte size (visible in NotePad++) — 31 number of bytes in this header: INSTALL 2169 "FILENAME.CSV" , 2169 , EOP ; use 2169 for DataSize .
<i>Content</i>	The contents of the file – it can be a format, graphic, or database/lookup table, etc.

Example INSTALL "REPRICE1.BAS"
SIZE 1.2, 1.1

This example installs the file REPRICE1.BAS into the printer's flash memory. The entire file's contents are not shown.

Creating a Custom Menu

You can create a custom menu with a different name and/or remove items from a menu.

MENU Command

Use this command to design your own menu.

Syntax `HEADER title$, list$, selected`

<i>HEADER</i>	Use MENU to design menu items. The menu appears on the display.
<i>title\$</i>	The title string shown on the display.
<i>list\$</i>	The list of items. <i>Must be separated by CRLF.</i>
<i>selected</i>	Variable name that will contain the selection result. <i>Selected = 0</i> when the user presses ESC (on USB keyboard) or MENU button (on printer).

Note: This command is available with version 2.0 and greater firmware.

Sample BASIC file for Custom Menu

```
DOWNLOAD F,"Store1"  
Speed  
Density  
Print Mode  
Offset  
Country  
EOP  
DOWNLOAD F,"Speed"  
4  
5  
6  
EOP  
DOWNLOAD F,"Density"  
6  
7  
8  
9  
10  
11  
12  
EOP  
DOWNLOAD F,"Print Mode"  
NONE  
TEAR OFF  
PEEL OFF  
CUT OFF  
EOP  
DOWNLOAD F,"Country"  
007  
031  
033  
034  
045  
EOP  
DOWNLOAD F,"DEMO.BAS"  
DPI = VAL(GETSETTING$("SYSTEM","INFORMATION","DPI"))  
:MAINLOOP  
OPEN "Store1",0
```

```

LIST$ = FREAD$(0, LOF("Store1"))
CLOSE 0
MENU "Store1", LIST$, OPTION$
IF LEN(OPTION$) = 0 THEN END
IF OPTION$ = "Speed" THEN SETTING$ =
GETSETTING$("CONFIG","Store1","SPEED")
IF OPTION$ = "Density" THEN SETTING$ =
GETSETTING$("CONFIG","Store1","DENSITY")
IF OPTION$ = "Print Mode" THEN SETTING$ =
GETSETTING$("CONFIG","Store1","PRINT MODE")
IF OPTION$ = "Offset" THEN SETTING$ =
GETSETTING$("CONFIG","Store1","OFFSET")
IF OPTION$ = "Country" THEN SETTING$ =
GETSETTING$("CONFIG","Store1","COUNTRY CODE")
IF LOF(OPTION$) <> 0 THEN
OPEN OPTION$,0
LIST$ = FREAD$(0, LOF(OPTION$))
CLOSE 0
MENU OPTION$, LIST$, SETTING$
ELSE
IF OPTION$ = "Offset" THEN INPUT "Offset", SETTING$
ENDIF
IF LEN(SETTING$) <> 0 THEN
IF OPTION$ = "Speed" THEN SPEED VAL(SETTING$)
IF OPTION$ = "Density" THEN DENSITY VAL(SETTING$)
IF OPTION$ = "Print Mode" THEN GOSUB SET_PRINT_MODE
IF OPTION$ = "Offset" THEN OFFSET VAL(SETTING$) / DPI
IF OPTION$ = "Country" THEN GOSUB SET_COUNTRY
ENDIF
GOTO MAINLOOP
:SET_PRINT_MODE
IF SETTING$ = "NONE" THEN SET TEAR OFF
IF SETTING$ = "TEAR OFF" THEN SET TEAR ON
IF SETTING$ = "PEEL OFF" THEN SET PEEL ON
IF SETTING$ = "CUT OFF" THEN SET CUTTER ON
RETURN
:SET_COUNTRY
IF SETTING$ = "007" THEN COUNTRY 007
IF SETTING$ = "031" THEN COUNTRY 031
IF SETTING$ = "033" THEN COUNTRY 033
IF SETTING$ = "034" THEN COUNTRY 034
IF SETTING$ = "045" THEN COUNTRY 045
RETURN
EOP
RUN "DEMO.BAS"

```

When DEMO.BAS is selected from the Custom Formats menu, you see the following screen:

Store1	
Speed	
Density	
Print Mode	
Offset	
Back	Select

Example INSTALL "9419DB.CSV",2105, UPC-A,Category,Product,Color,Size,Price...

This example installs the file 9419DB.CSV into the printer's flash memory. The byte size of the file (without the header information) is 2105. The entire file's contents are not shown.

Sample Database/Lookup Table

The example text below shows a small database file.

```
INSTALL "9419DB.CSV",2105,UPC-A,Category,Product,Color,Size,Price,Sale Price,EAN13,Quantity,
028028300018,Mens,Ess LS Crew,Optic white,Small,$19.95,$15.00,4028028300014,12
028028300025,Mens,Solid pique polo,Gray,Small,$29.95,$23.00,4028028300021,3
028028300032,Mens,Solid pique polo,Gray,Medium,$29.95,$23.00,4028028300038,9
028028300049,Mens,Solid pique polo,Gray,Large,$29.95,$23.00,4028028300045,9
028028300056,Mens,Solid pique polo,True black,Medium,$29.95,$23.00,4028028300052,9
028028300063,Mens,Solid pique polo,True black,Small,$29.95,$23.00,4028028300069,3
028028300070,Mens,Solid pique polo,True black,Large,$29.95,$23.00,4028028300076,3
028028300087,Mens,Ess LS Crew,Navy,Small,$12.00,$9.00,4028028300083,6
028028300094,Mens,Ess Crewneck T,Dark charcoal,Small,$16.95,$14.00,4028028300090,6
028028300100,Mens,Ess Crewneck T,Dark charcoal,Medium,$16.95,$14.00,4028028300106,18
028028300117,Mens,Ess Crewneck T,Dark charcoal,Large,$16.95,$14.00,4028028300113,6
028028300124,Mens,Ess Crewneck T,Optic white,Medium,$16.95,$15.00,4028028300120,27
028028300131,Mens,Ess Crewneck T,Optic white,Large,$16.95,$15.00,4028028300137,6
028028300148,Mens,Ess Crewneck T,True black,Small,$16.95,$13.00,4028028300144,6
028028300155,Mens,Ess Crewneck T,True black,Medium,$16.95,$13.00,4028028300151,27
028028300162,Mens,Ess Crewneck T,True black,Small,$16.95,$13.00,4028028300168,3
028028300179,Mens,Ess Crewneck T,True black,Large,$16.95,$13.00,4028028300175,15
028028300186,Mens,Ess Crewneck T,True indigo,Small,$16.95,$13.00,4028028300182,9
028028300193,Mens,Ess Crewneck T,True indigo,Medium,$16.95,$13.00,4028028300199,9
028028300209,Mens,Ess Crewneck T,True indigo,Large,$16.95,$13.00,4028028300205,3
028028300216,Womens,Terry Hoodie,Dark charcoal,Small,$39.96,$31.00,4028028300212,15
028028300223,Womens,Terry Hoodie,Dark charcoal,Medium,$39.96,$31.00,4028028300229,21
028028300230,Womens,Stretch Hoodie,Charcoal,Large,$53.95,$43.00,4028028300236,3
028028300247,Womens,MaxHeat Uneck T,Navy,Medium,$18.36,$14.00,4028028300243,9
028028300254,Womens,MaxHeat Uneck T,Navy,Large,$18.36,$14.00,4028028300250,3
EOP
```

Sample Format Using a Database/Lookup Table

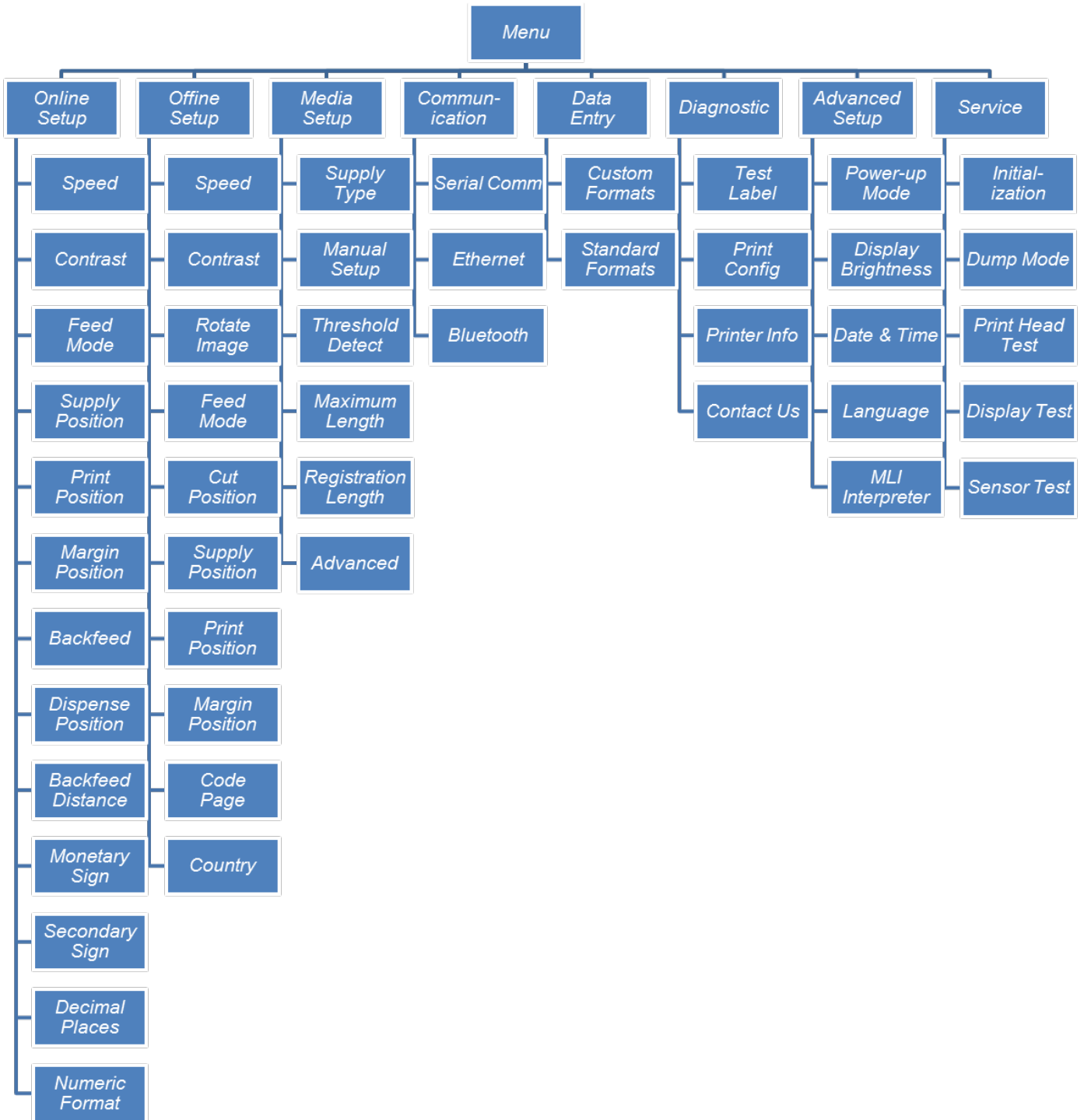
The example text below shows a sample format that references the sample database/lookup table. The field highlighted below references the installed database/lookup table.

```
INSTALL "REPRICE1.BAS"
SIZE 1.2, 1.1
DIRECTION 1
REFERENCE 0,0
OFFSET 0 mm
SET PEEL OFF
SET CUTTER OFF
SET PARTIAL_CUTTER OFF
SET KEY2 INPUT "Exit"+CHR$(13)
COPY S,"9419DB.CSV","BUFFER.TXT"
OPEN "BUFFER.TXT",0
:LOOP
INPUT "Scan a barcode",UPCA$
IF UPCA$ = "Exit" THEN GOTO END
:LOOP1
FILE_LOC = FSEARCH(0,UPCA$)
IF FILE_LOC <>-1 THEN GOTO READ_OUT
INPUT "Not Found, Retry",UPCA$
IF UPCA$ = "Exit" THEN GOTO END
GOTO LOOP1
:READ_OUT
POS = 1
;;read a whole row
SEEK 0, FILE_LOC
READ 0, LINE$
;;read UPCA
GOSUB NEXTCOLUMN
;;get Category
GOSUB NEXTCOLUMN
CATEGORY$ = DATA$
;;get Product
GOSUB NEXTCOLUMN
PRODUCT$ = DATA$
;;get Color
GOSUB NEXTCOLUMN
COLOR$ = DATA$
;;get Size
GOSUB NEXTCOLUMN
SIZE$ = DATA$
;;get Price
GOSUB NEXTCOLUMN
PRICE$ = DATA$
;;get Sale Price
GOSUB NEXTCOLUMN
SALEPRICE$ = DATA$
;;get EAN13
GOSUB NEXTCOLUMN
EAN13$ = DATA$
;;get Quantity
GOSUB NEXTCOLUMN
QUANTITY$ = DATA$
CLS
TEXT 168,148,"0",0,12,12,2,SALEPRICE$
BARCODE
120,10,"UPCA",80,1,0,0,4,2,UPCA$
PRINT 1
GOTO LOOP
:NEXTCOLUMN
IF MID$(LINE$, POS,1)="," THEN
DATA$=MID(LINE$,POS+1,INSTR(POS+1,LINE$(CHR(44))-POS-1)
POS=INSTR(POS+1,LINE$,CHR$(44))
ELSE
DATA$ = MID$(LINE$, POS, INSTR(POS, LINE$, ",") - POS)
ENDIF
POS = INSTR(POS, LINE$, ",") + 1
RETURN
:END
SET KEY2 ON
EOP
```


MENU STRUCTURE



Use the navigation button then press **Select** when you see the option you need.



AMERICAS

170 Monarch Lane
Miamisburg, OH 45342
937 865 2123 (direct)
Tel +800 543 6650
(8:00 a.m. – 6:30 p.m., EDT)
Fax +937 865 6663

ASIA

No. 7 Chun Ying Street
Tseung Kwan O Industrial Estate
New Territories, Hong Kong
Tel +852 2372 3169
Fax +852 2995 0014

WESTERN EUROPE

1 Thomas Road
Wooburn Green
Bucks HP10 0PE
Tel +(44) 1628 859500
Fax +(44) 1628 859567

ASIA PACIFIC**NEW SOUTH WALES**

61 Vore Street
Silverwater NSW 2128
Tel +(02) 9647 1833
Fax +(02) 9647 1914
Toll free (Outside Sydney only)



Printer
Solutions