

# USB DRIVER INSTALLATION GUIDE

Use these instructions to install the USB drivers and Microsoft® synchronization software for your Pathfinder® 6057 printer. You need these utilities for your printer to communicate with your computer.

These instructions are written for Microsoft® Windows® XP, Windows Vista®, Windows® 7, and Windows® 10. You must have a USB port and the proper cable to connect the printer to your computer.

The driver package filename is **605X\_USB\_WIN10**. The single driver supports Microsoft® Windows® XP, Windows Vista®, Windows® 7, and Windows® 10, which use the x86 and x64 architecture.

To update the driver, see “Updating the USB driver for Microsoft® Windows® XP” or “Updating the USB driver for Microsoft® Windows Vista® or Windows® 7”.

Microsoft® synchronization software (ActiveSync® and Windows Mobile® Device Center) are available on the Microsoft® Web site ([www.microsoft.com](http://www.microsoft.com)).

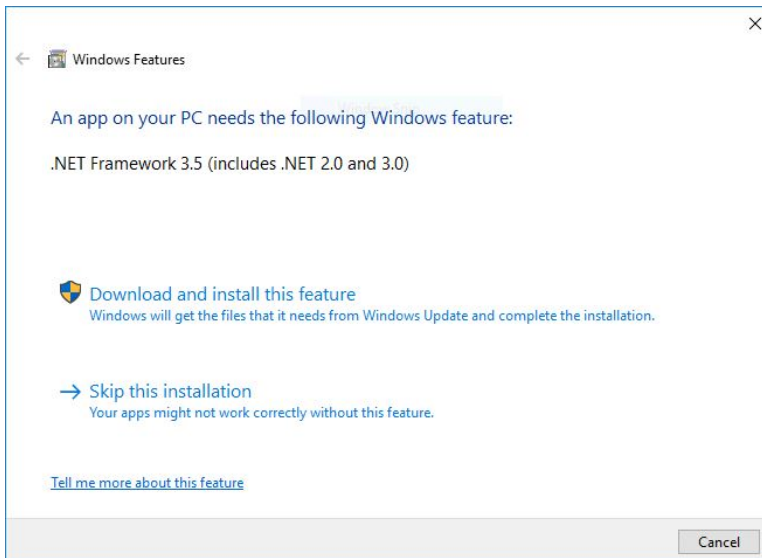
Information in this document supercedes information in previous versions. Check our Web site (<http://printers.averydennison.com>) for the latest documentation and release information.

## Installing the Windows 10 USB Driver

---

If you have Windows® 10, you must install WMDC **before** installing the USB driver.

**Note:** A prerequisite for installing Windows Mobile Device Center (WMDC) is installing the .NET Framework 3.5. If this is not installed on your computer, you will be prompted to install it:

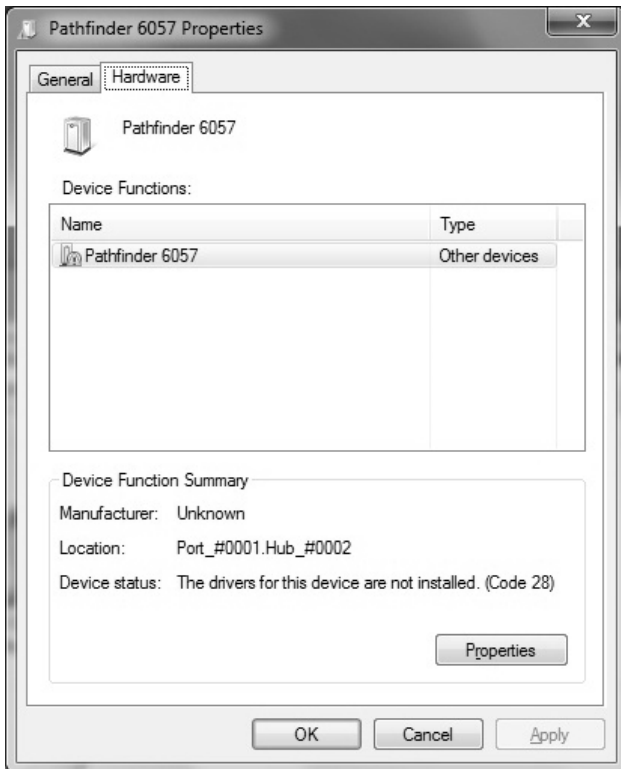


Click **Download and install this feature**.

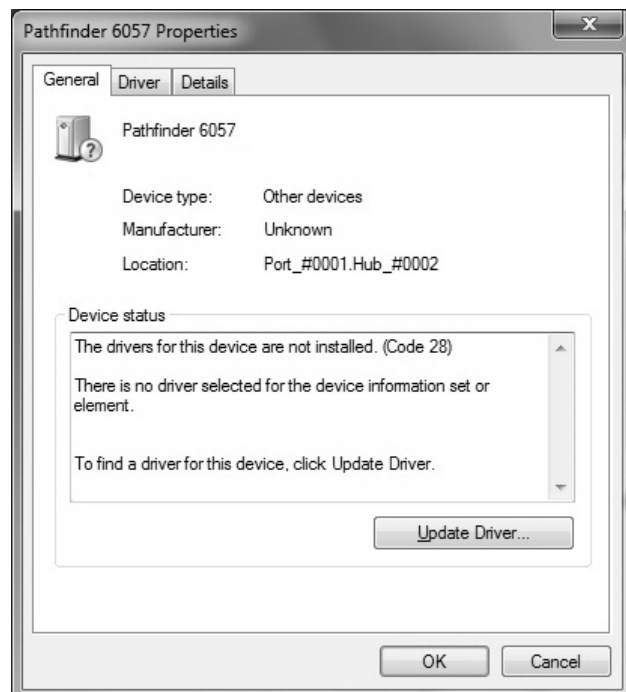
Avery Dennison® and Pathfinder® are trademarks of Avery Dennison Corporation. Microsoft, Windows, Vista, ActiveSync, and Windows Mobile are trademarks of Microsoft Corporation in the United States and/or other countries.



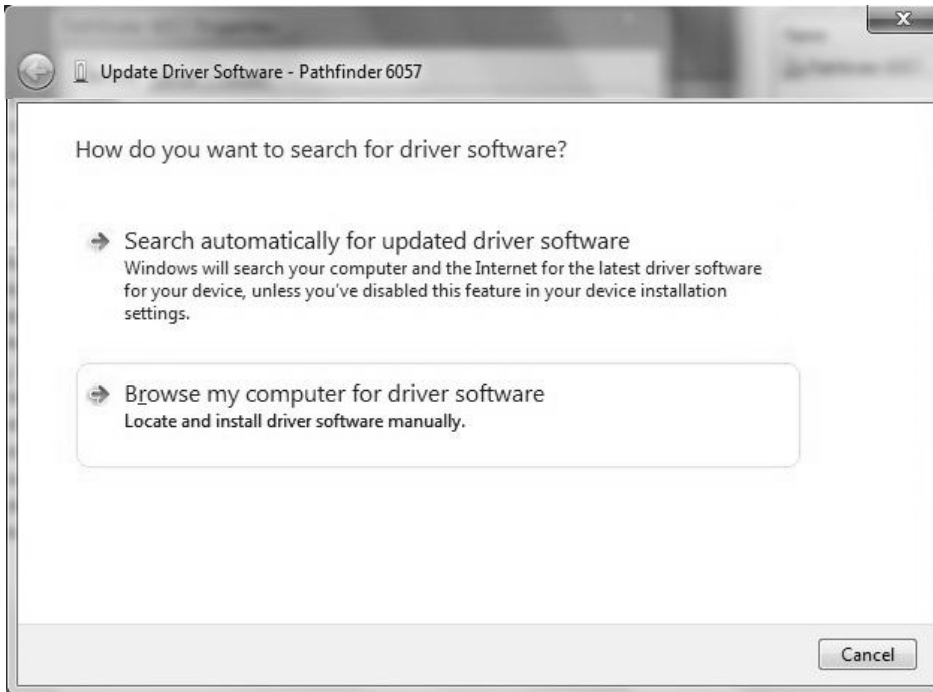
1. Download the latest USB drivers from our web site. Save the driver to your computer. You must unzip the driver folder for installation.
2. Turn on the printer and wait for the desktop to load.
3. Use the designated USB cable to connect the USB port on the printer to the USB port on your computer. Refer to the *Operator's Handbook* available on our web site.
4. Go to your computer's **Start** menu and select **Control Panel, Devices and Printers**.
5. Double click on **Pathfinder 6057**.
6. Select the **Hardware** tab.



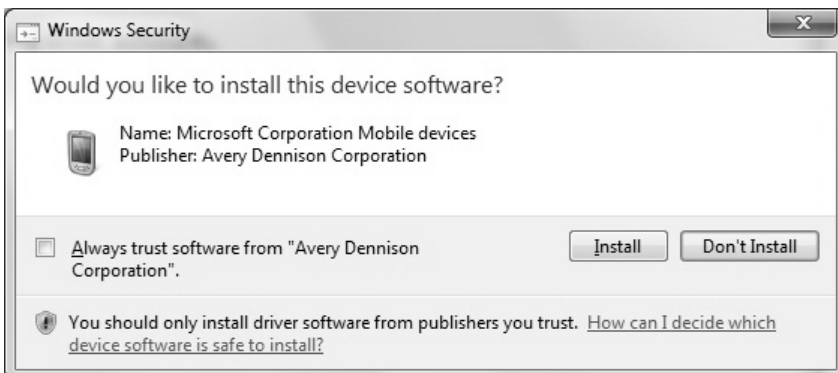
7. Select **Properties, Change Settings, then Update Driver**.



8. Select **Browse my computer for driver software**.

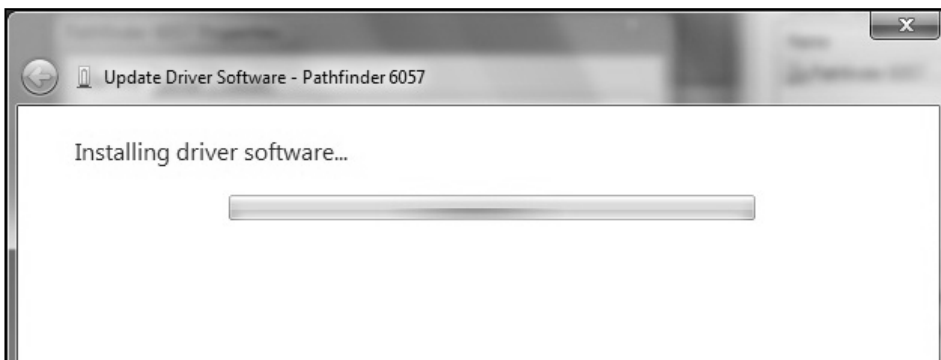


9. Click **Browse** then navigate to the location on your computer's hard drive where you saved the downloaded driver file. Make sure **Include subfolders** is selected. Click **Next**.



10. Click **Install**.

While the driver is installing, you see:



11. Click **Close** when the driver installation is complete.

## Working with Windows® XP

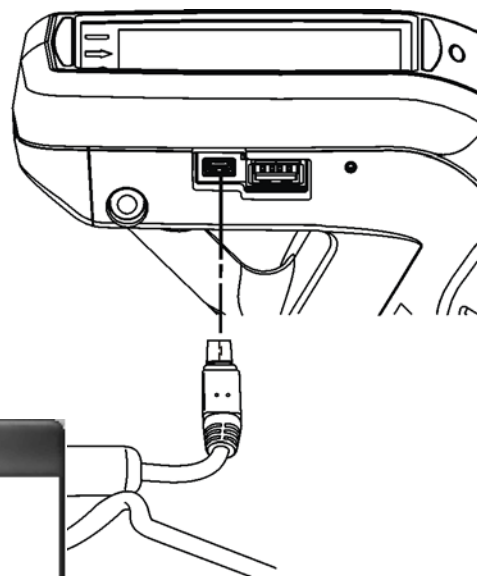
---

If your computer has the Windows® XP operating system, you need:

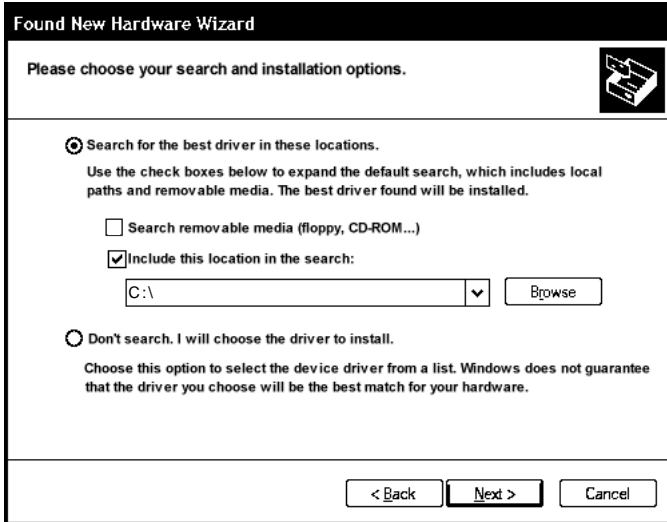
- ◆ the Pathfinder® 6057 driver for Windows® XP found on our Web site.
- ◆ Microsoft ActiveSync®.

### Installing the USB Driver

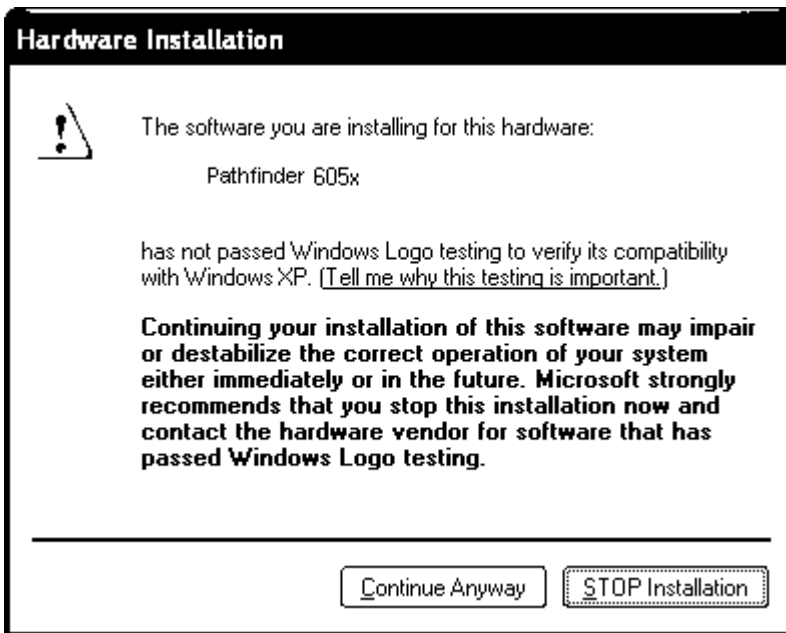
1. Download the latest drivers from our Web site (save the file to your computer's hard drive).
2. Turn on the printer.
3. Use the designated USB cable to connect the USB port on the printer to the USB port on your computer. Refer to the *Operator's Handbook* available on our web site for more information.
4. When the Found New Hardware Wizard box opens, select **Install from a list or location (Advanced)**, then click **Next**.



5. Select **Search for the best driver in these locations** then select **Include this location in the search** (specify the location on your computer's hard drive where you saved the driver file).



6. Click **Next** to continue through the installation by following the instructions on the screen.
7. When you see the following message box, click **Continue Anyway**.



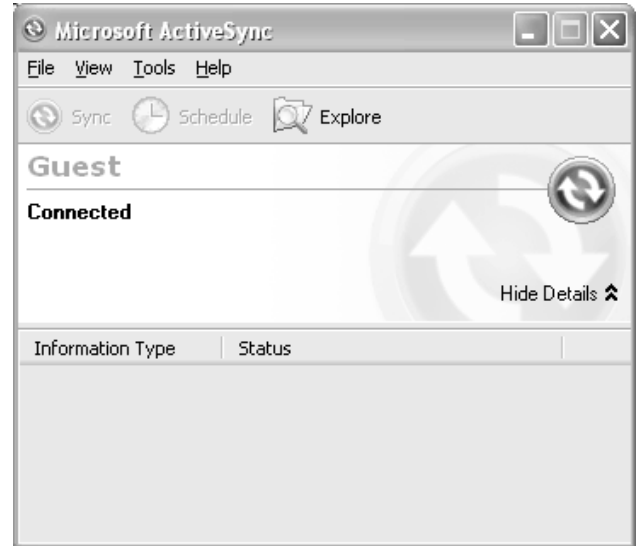
8. Click **Finish**.



9. Download and install the latest ActiveSync® synchronization software from the Microsoft® Web site.

## Using Microsoft® ActiveSync® Synchronization Software

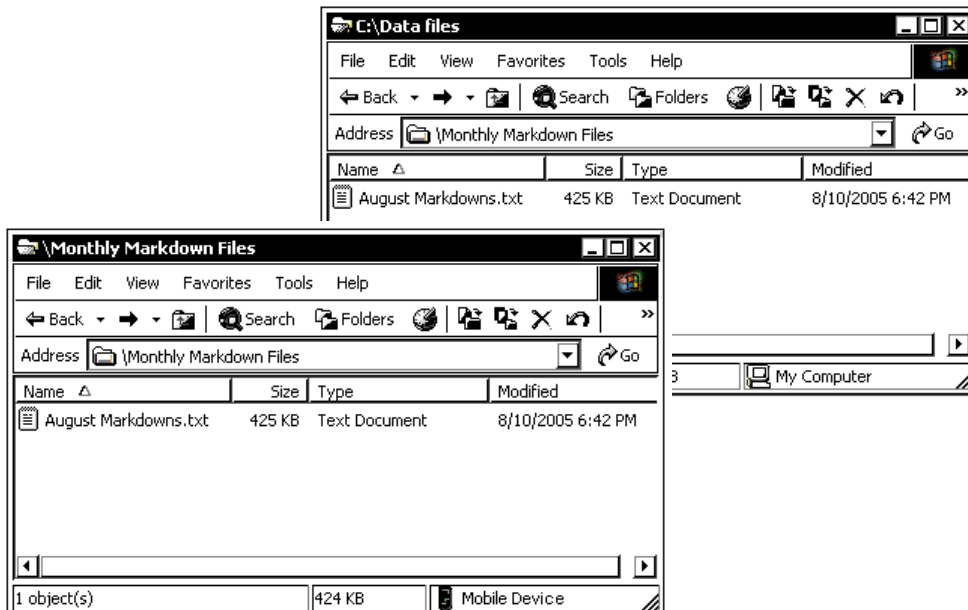
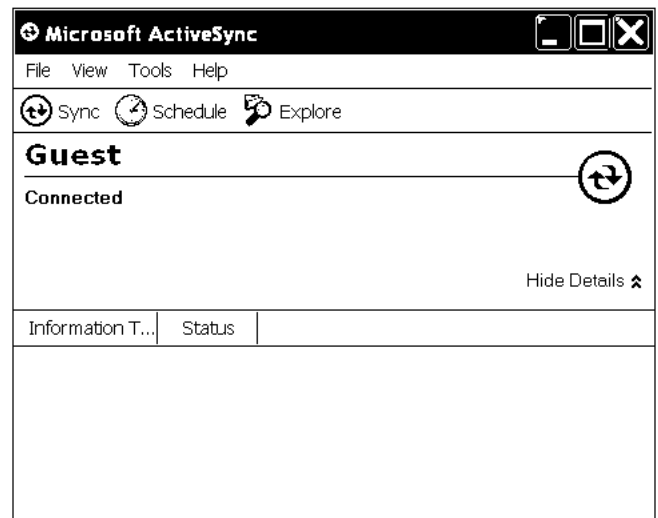
1. Turn on the printer, wait for the desktop to load, then connect the USB cable to your computer and printer.
2. ActiveSync automatically detects your printer. When prompted to set up a Partnership, select **No**, then click **Next**.
3. Once installation is complete, you see “Connected.”



## Transferring Files to the Printer

To transfer data files to the printer:

1. Open the folder with your data files on your computer.
2. Turn on the printer and wait for the desktop to load.
3. Connect the USB cable to your computer and printer.
4. Click **Explore** on the ActiveSync® utility after it connects to the printer. A new window appears called Mobile Device.
4. Open the destination folder for the data files on the Mobile Device (printer).
5. Drag the files from your computer to the Mobile Device folder.



## Updating the USB driver for Microsoft® Windows® XP

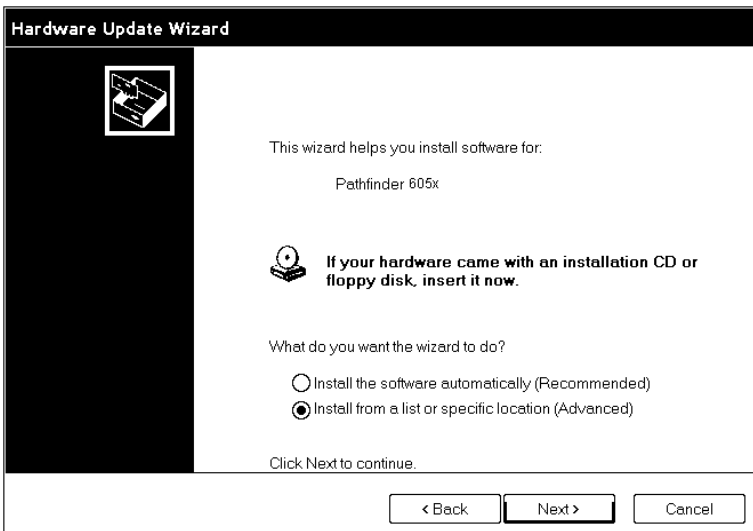
1. Download the Pathfinder® 6057 Update driver from our Web site. Save it to your computer.
2. Turn on the printer and wait for the desktop to load.
3. Attach the USB cable to your computer and printer.

**Note:** If the ActiveSync Partnership dialog box appears, click **No**.

4. On your computer, from the **Start** menu select **Settings, Control Panel**, then **System**.
5. On the **Hardware** tab, click **Device Manager**.
6. Double click **Windows CE USB Devices**.
7. Right click **Pathfinder 6057** and select **Properties**.
8. Select the **Driver** tab and click **Update Driver**.
9. Select **No, not this time** and click **Next**.

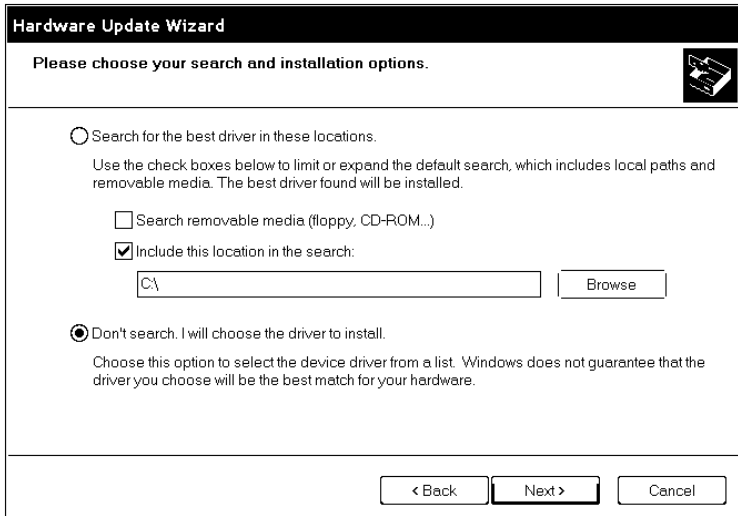


10. Select **Install from a list or specific location (Advanced)** and click **Next**.

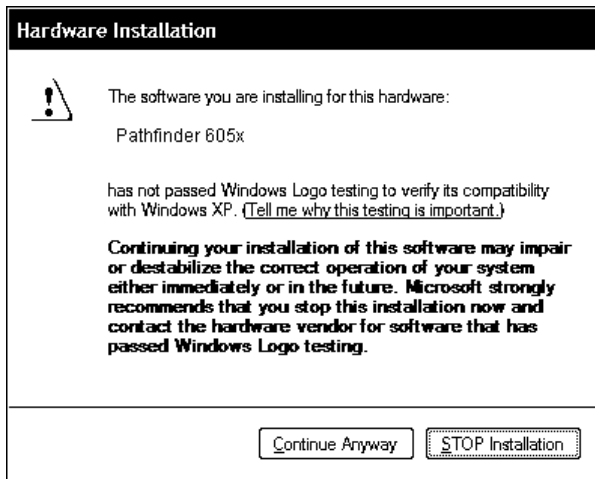




11. Select **Don't search, I will choose the driver to install** and click **Next**.



12. Select **Browse**, navigate to the updated driver and click **OK**.



13. Click **Continue Anyway**.

14. Click **Finish**.

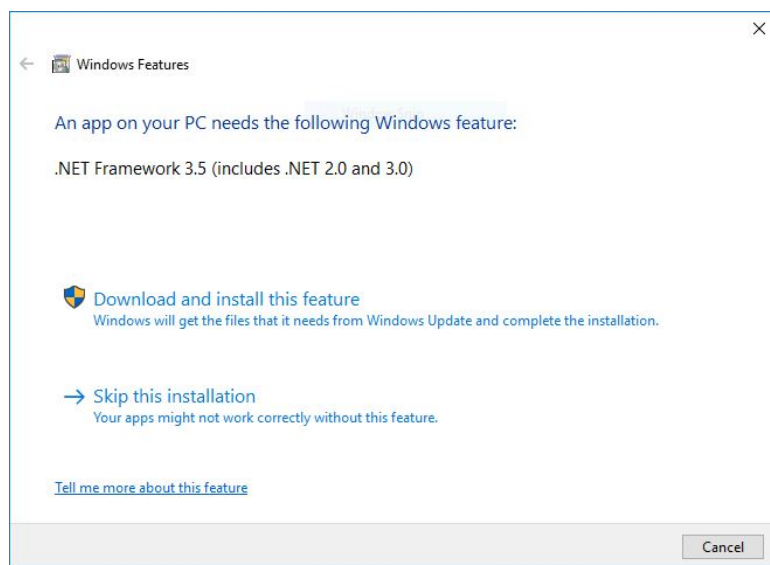
15. Close the Properties window, disconnect the USB cable from the printer, then click **Yes** to restart your computer.

## Working with Microsoft® Windows Vista® or Windows® 7

If your computer has the Windows Vista® or Windows® 7 operating system, you need:

- ◆ the Pathfinder® 6057 driver for Windows Vista® or Windows® 7.
- ◆ Windows Mobile® Device Center (WMDC).

**Note:** A prerequisite for installing Windows Mobile® Device Center (WMDC) is installing the .NET Framework 3.5. Older operating systems may come with .NET Framework 3.5 already installed. If it is not installed on your computer, you will be prompted to install it.



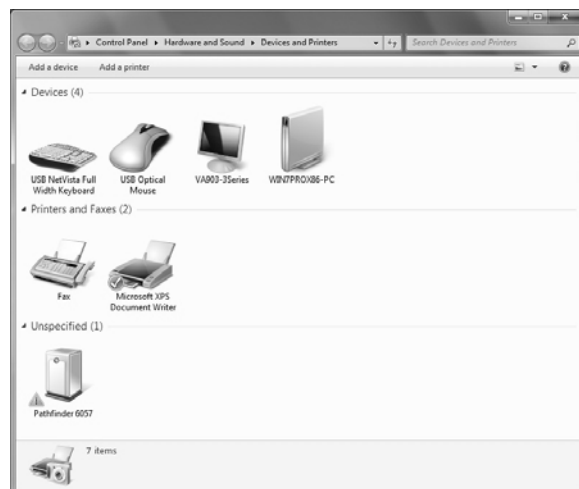
Click **Download and install this feature**.

### Installing the USB Driver

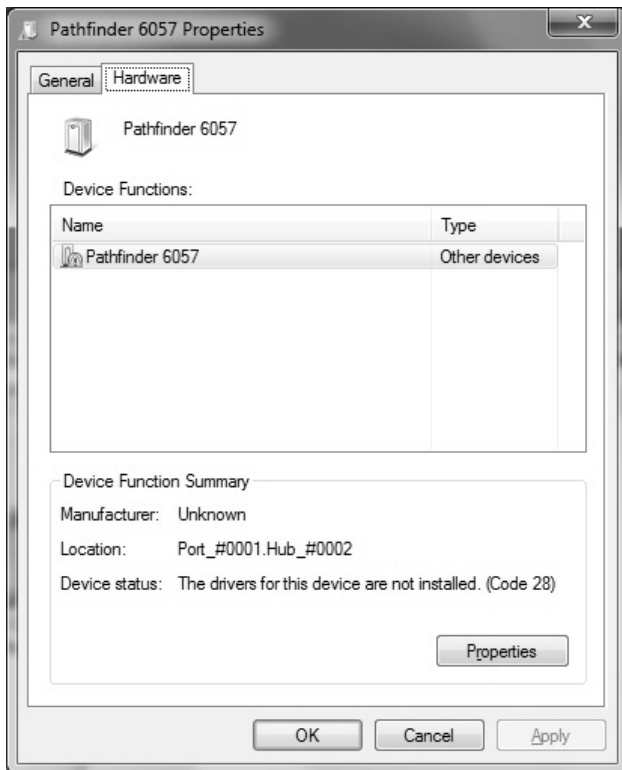
1. Download the latest drivers from our Web site (save the file to your computer's hard drive). You must unzip the driver folder for installation.

**Note:** If you have a Windows® 32-bit Operating System, you must install WMDC (for 32-bit) **before** following the instructions below. Within the 6057 Windows Vista®/Windows® 7 USB Driver folder, double click on the file “drvupdate-x86” and follow the instructions on the screen.

2. Turn on the printer and wait for the desktop to load.
3. Use the designated USB cable to connect the USB port on the printer to the USB port on your computer. Refer to the *Operator's Handbook* available on our web site for more information.
4. Go to your computer's **Start** menu and select **Control Panel, Devices and Printers**.
5. Double click on **Pathfinder 6057**.



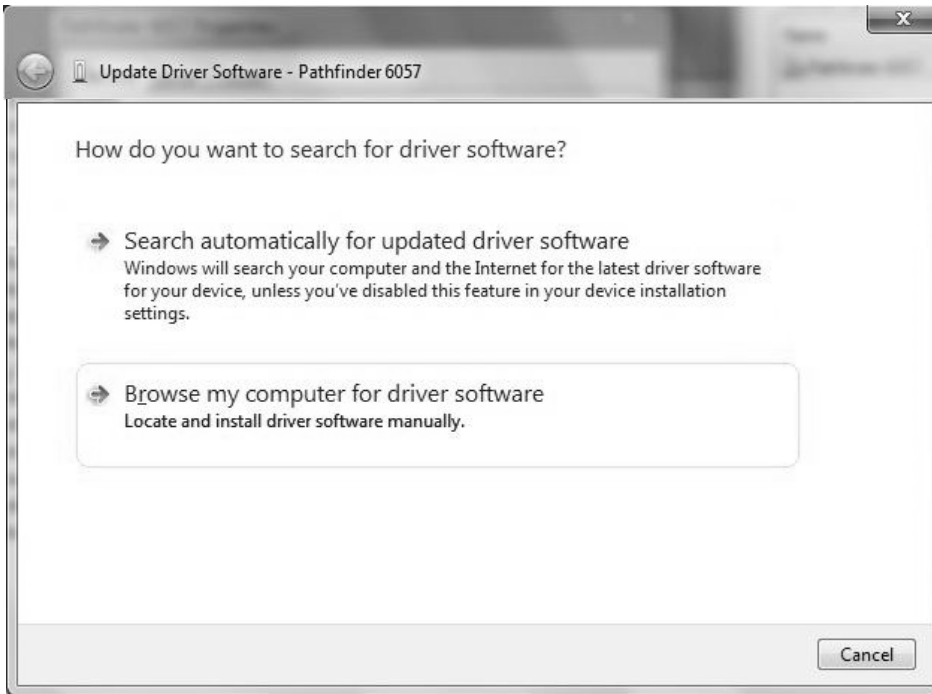
6. Select the **Hardware** tab.



7. Select **Properties**, **Change Settings**, then **Update Driver**.

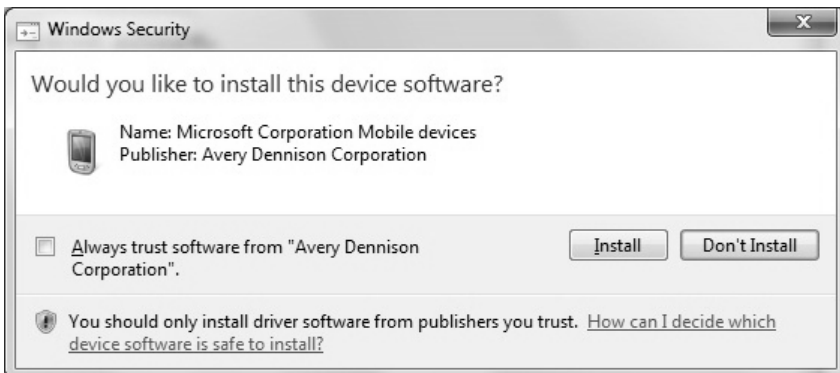


8. Select **Browse my computer for driver software**.

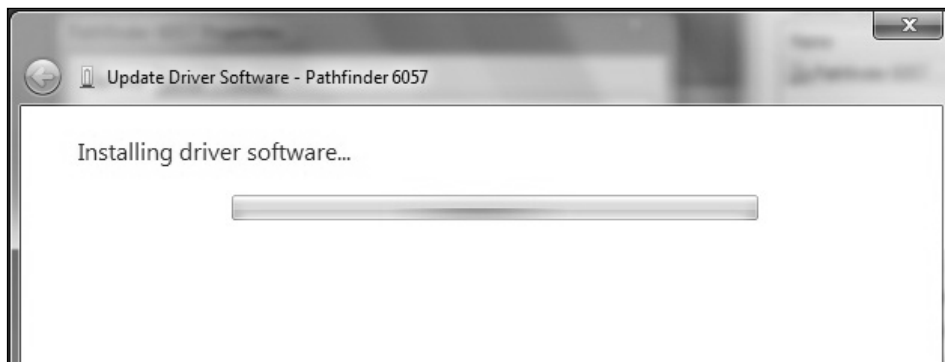


9. Click **Browse** then navigate to the location on your computer's hard drive where you saved the downloaded driver file. Make sure that Include subfolders is selected. Click **Next**.

**Note:** If the Windows® security message appears, click **Install**.



While the driver is installing, you see:



**Note:** If you have a Windows® 64-bit Operating System, WMDC installs automatically following driver installation.

Once WMDC detects that the 6057 printer is plugged in to the computer, you see:



## Using Microsoft® Windows Mobile Device Center (WMDC)

1. Click **Connect without setting up your device**.
2. Click **File Management** then **Browse the contents of your device**. You can view the files on your printer and add and/or remove files.



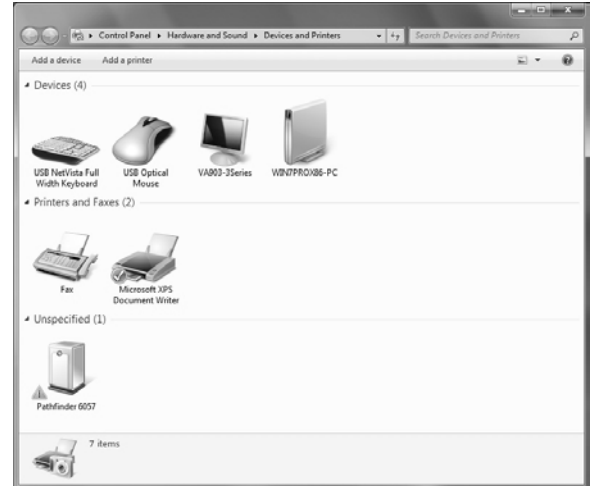
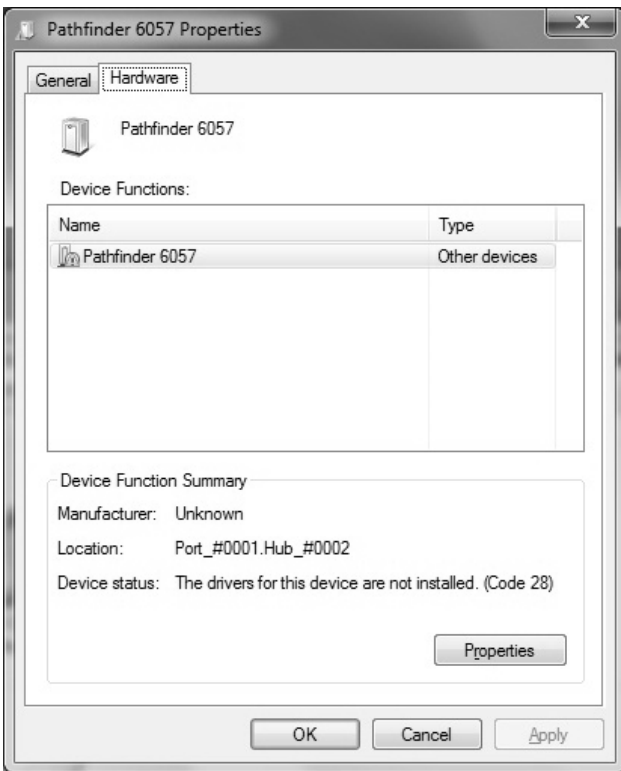
**Note:** When you double-click a folder in the Mobile Device folder, it may take a few seconds to open.

## Updating the USB driver

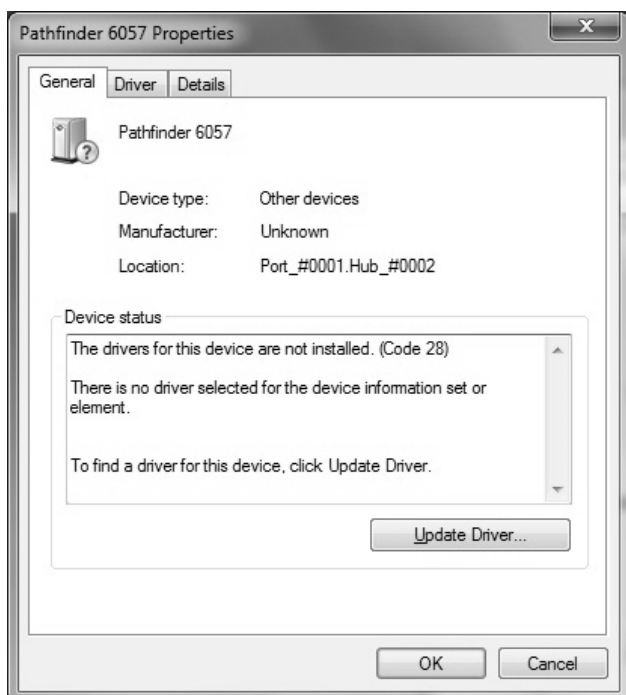
1. Download the Pathfinder® 6057 driver for Windows Vista®/Windows® 7 from our Web site. Save it to your computer.
2. Turn on the printer and wait for the desktop to load.
3. Attach the USB cable to your computer and printer.

**Note:** You must unzip the driver folder for installation.

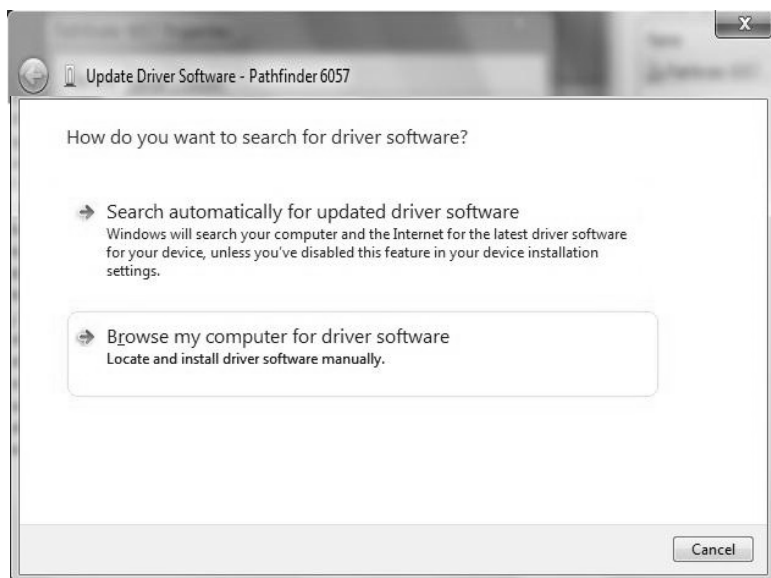
4. Turn on the printer and wait for the desktop to load.
5. Use the designated USB cable to connect the USB port on the printer to the USB port on your computer. Refer to the *Operator's Handbook* available on our web site for more information.
6. Go to your computer's **Start** menu and select **Control Panel, Devices and Printers**.
7. Double click on **Monarch 605x**.
8. Select the **Hardware** tab.



9. Select **Properties** then **Update Driver**.



10. Select **Browse my computer for driver software**.



11. Click **Browse** then navigate to the location on your computer's hard drive where you saved the downloaded driver file. Make sure that Include subfolders is selected. Click **Next**.

**Note:** If the Windows® security message appears, click **Install**.

