

USB DRIVER INSTALLATION GUIDE

Use these instructions to install the USB and Microsoft® ActiveSync® synchronization software for your Monarch® Pathfinder® Ultra® Platinum 6039™ printer and computer to communicate. These instructions are written for Microsoft® Windows® 2000SP4/XP and Windows® 10. You must have a USB port and the proper cable to connect the printer to your computer.

The driver package filename is **6039_USB_WIN10**. The single driver supports Microsoft® Windows® XP, Windows Vista®, Windows® 7, and Windows® 10, which use the x86 and x64 architecture.

You need ActiveSync to transfer files between your printer and computer. The ActiveSync software is available on the Microsoft® Web site (www.microsoft.com) by searching on ActiveSync.

Information in this document supercedes information in previous versions. Check our Web site (<http://printers.averydennison.com>) for the latest documentation and release information.

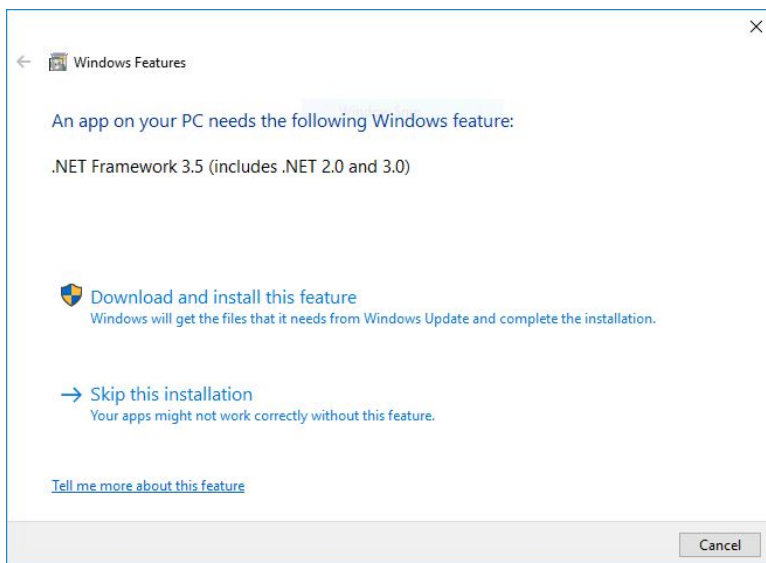
Downloading the Latest Driver

You can also download the latest USB driver from our web site. Once you extract and save the necessary files from the .zip file, follow the instructions for installing the USB driver. To update the driver, see “Updating the USB driver for Microsoft® Windows® 2000” and “Updating the USB driver for Microsoft® Windows® XP.”

Installing the Windows 10 USB Driver

If you have Windows® 10, you must install WMDC **before** installing the USB driver.

Note: A prerequisite for installing Windows Mobile Device Center (WMDC) is installing the .NET Framework 3.5. If this is not installed on your computer, you will be prompted to install it:

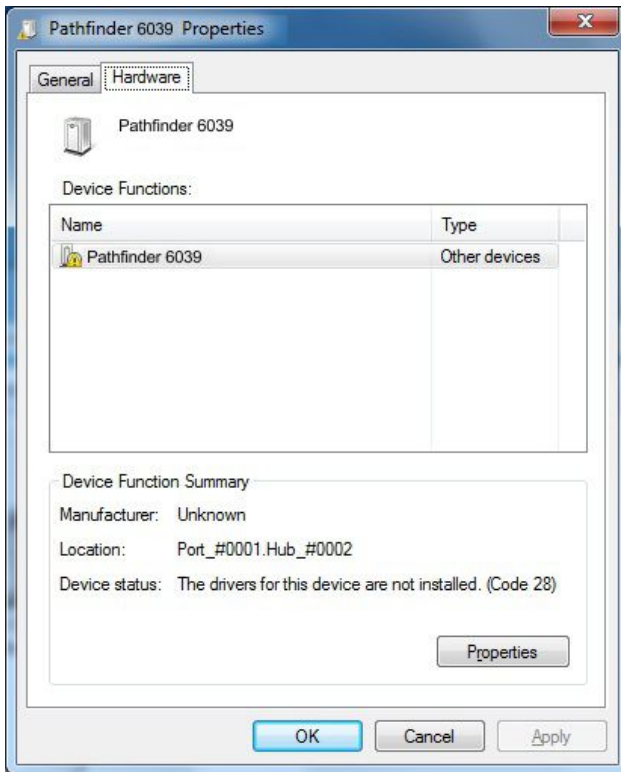
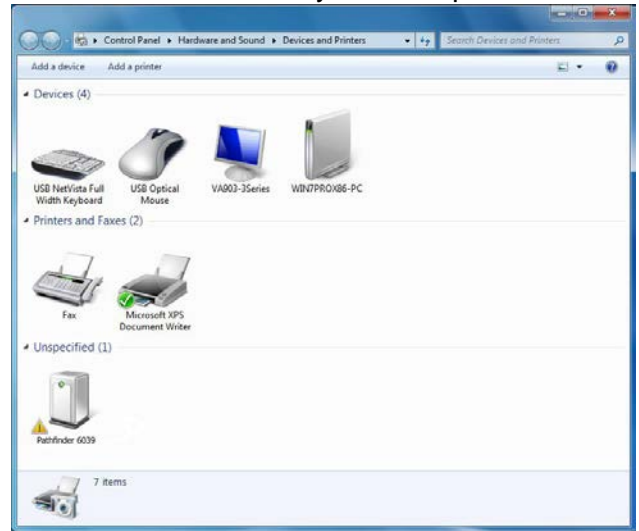


Click **Download and install this feature**.

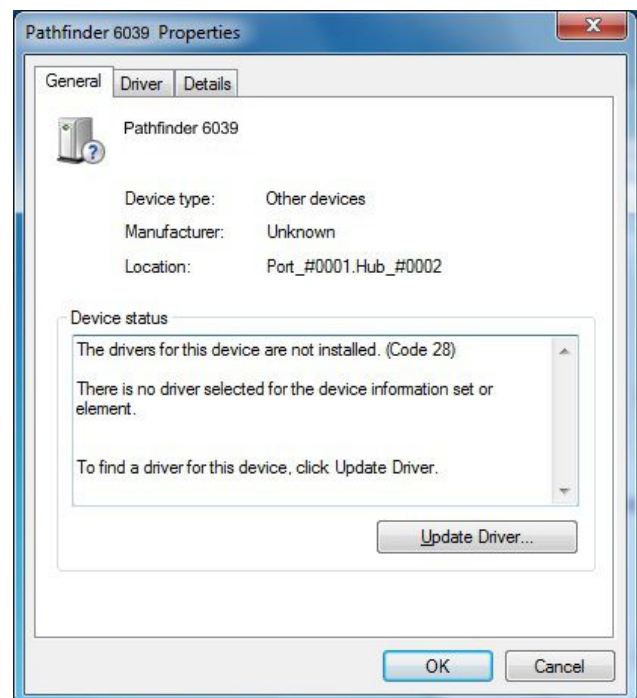
Avery Dennison®, Monarch®, Pathfinder®, Ultra® and 6039 are trademarks of Avery Dennison Corp. Microsoft, Windows, Vista, and ActiveSync are trademarks of Microsoft Corporation in the United States and/or other countries.



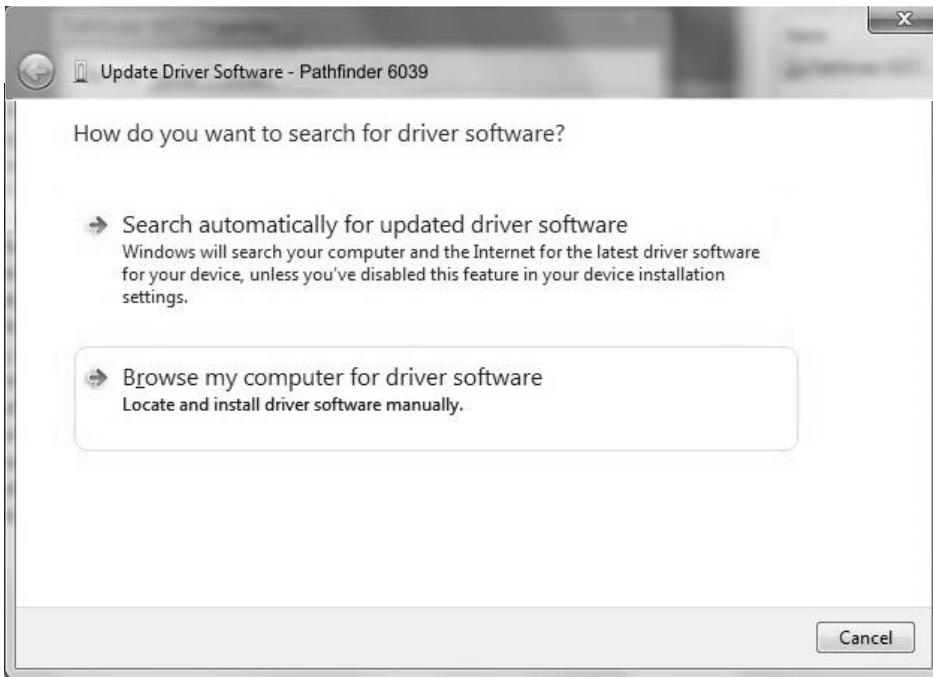
1. Download the latest USB drivers from our web site. Save the driver to your computer. You must unzip the driver folder for installation.
2. Turn on the printer and wait for the desktop to load.
3. Use the designated USB cable to connect the USB port on the printer to the USB port on your computer.
4. Go to your computer's **Start** menu and select **Control Panel, Devices and Printers**.
5. Double click on **Pathfinder 6039**.
6. Select the **Hardware** tab.



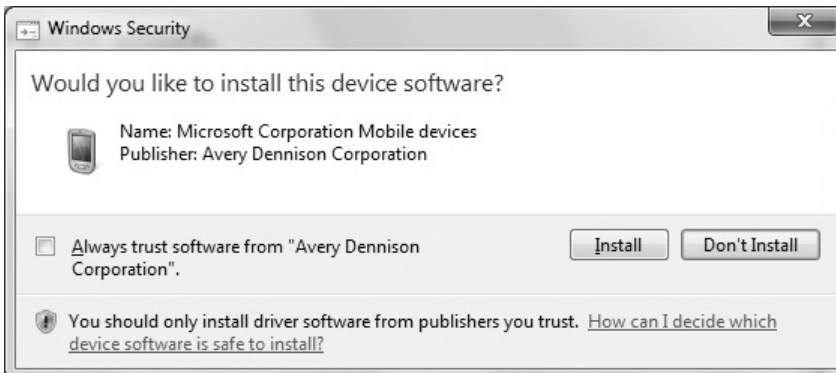
7. Select **Properties, Change Settings**, then **Update Driver**.



8. Select **Browse my computer for driver software.**

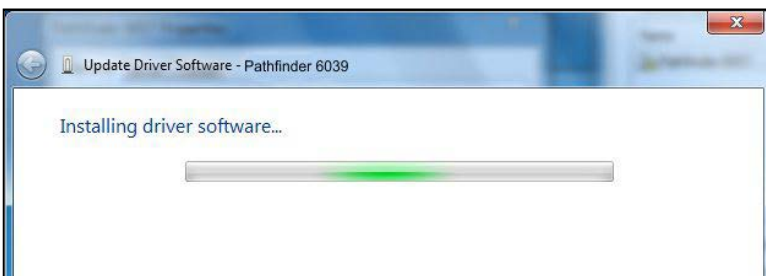


9. Click **Browse** then navigate to the location on your computer's hard drive where you saved the downloaded driver file. Make sure **Include subfolders** is selected. Click **Next**.



10. Click **Install**.

While the driver is installing, you see:



11. Click **Close** when the driver installation is complete.

Installing the USB driver for Microsoft® Windows® 2000

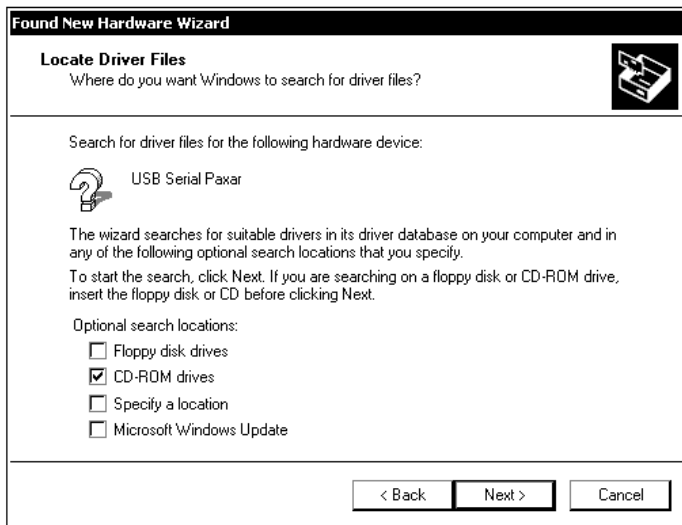
1. Download the latest USB drivers from our web site. Save the driver to your computer. You must unzip the driver folder for installation.
2. Turn on the printer and wait for the desktop to load.
3. Use the designated USB cable to connect the USB port on the printer to the USB port on your computer. The computer automatically detects the USB port and launches the Found New Hardware Wizard.



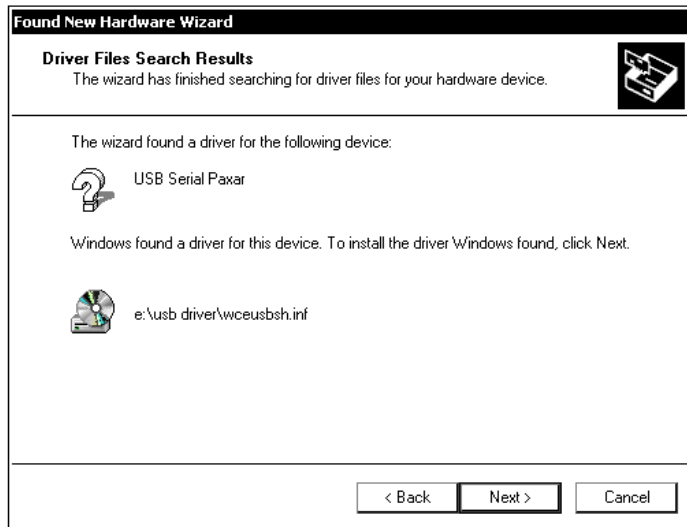
4. Click **Next**.



5. Select **Search for a suitable for a driver for my device (recommended)**. Click **Next**.



6. Select **CD-ROM drives** to install from the CD or **Specify a location** if you downloaded the drivers from a Web site. Click **Next**.



7. Click **Next**.



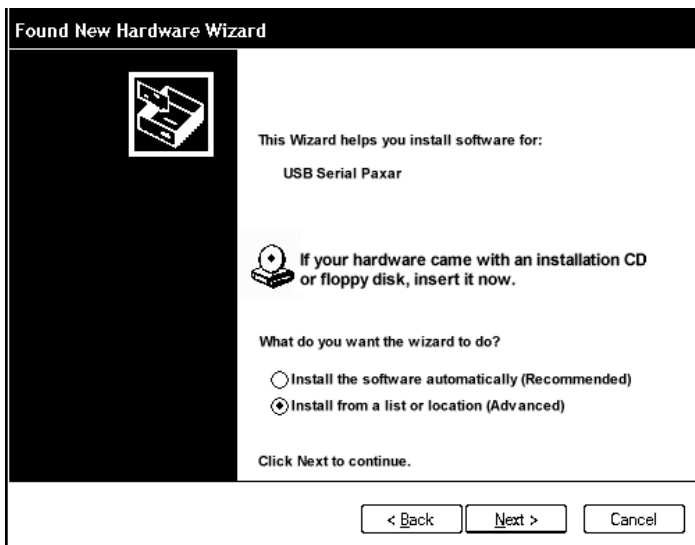
8. Click **Finish**.

Installing the USB driver for Microsoft® Windows® XP

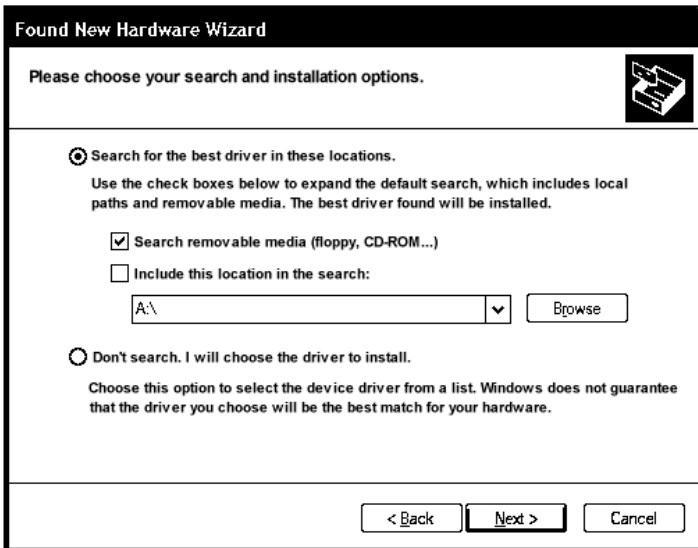
1. Insert the CD in to your CD-ROM drive.
2. Turn on the printer and wait 30 seconds for the desktop to load.
3. Attach the USB cable to your computer and printer. The computer automatically detects the USB port and launches the Found New Hardware Wizard.



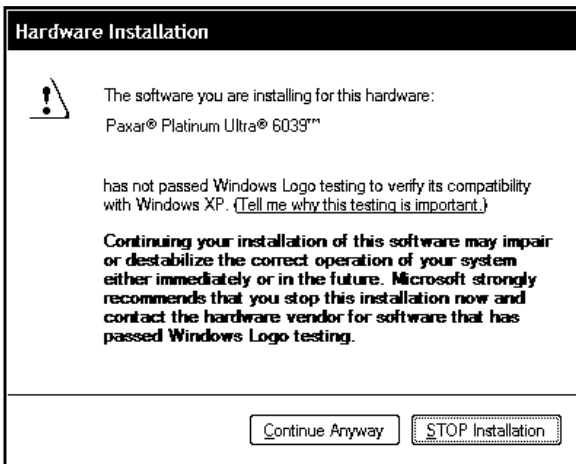
4. Select **No, not this time**, then click **Next**.



5. Select **Install from a list or specific location (advanced)**, then click **Next**.



6. Select only **Search removable media (floppy, CD-ROM)**, then click **Next** to continue through the installation by following the instructions on the screen.



7. Click **Continue Anyway**.
8. When the installation is complete, you see
9. Click **Finish**.

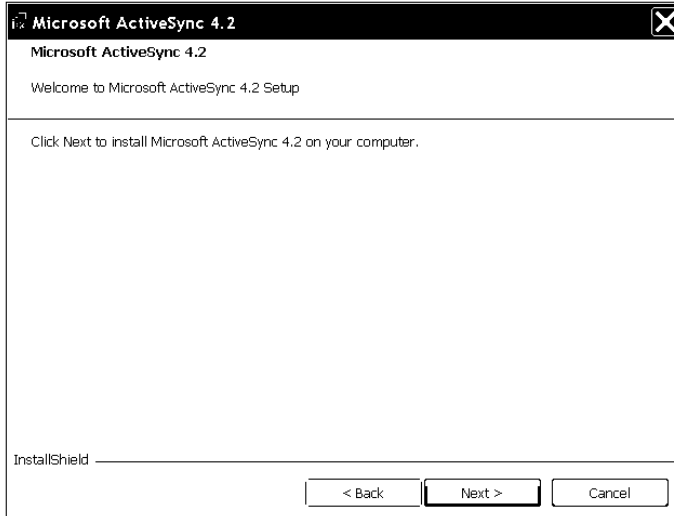


Installing Microsoft® ActiveSync® Synchronization Software

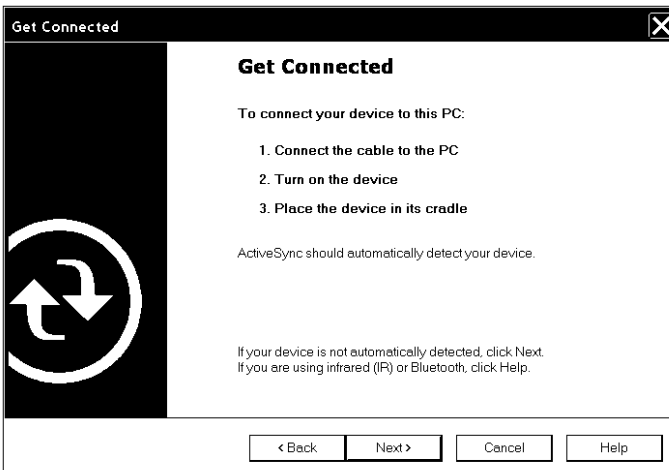
Download the ActiveSync synchronization software from the Microsoft.com Web site. Follow the download instructions on the site.

Note: To use ActiveSync with Linux® or similar operating system, you need the SynCE software. You can download it from synce.sourceforge.com.

1. Double click the ActiveSync setup file to begin the installation.

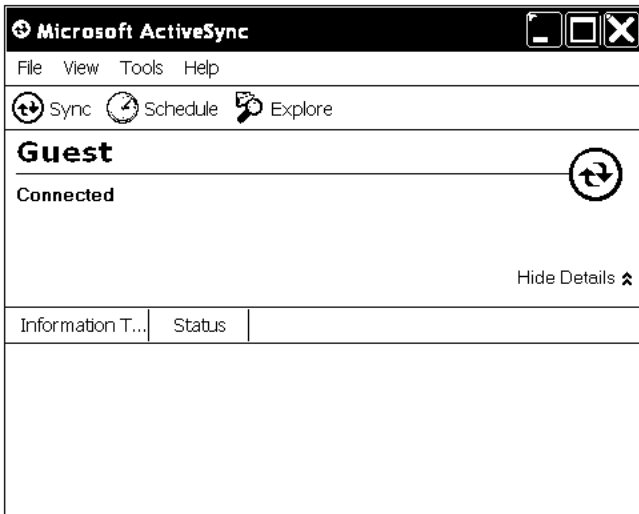


2. Click **Next** and follow the instructions on the screen. When the installation is finished, you are prompted to restart your computer. After it restarts, you see



3. Turn on the printer, wait 30 seconds for the desktop to load, then connect the USB cable to your computer and printer.

4. Select Yes or No and install any needed components when prompted to set up a Partnership. Click **Next**.



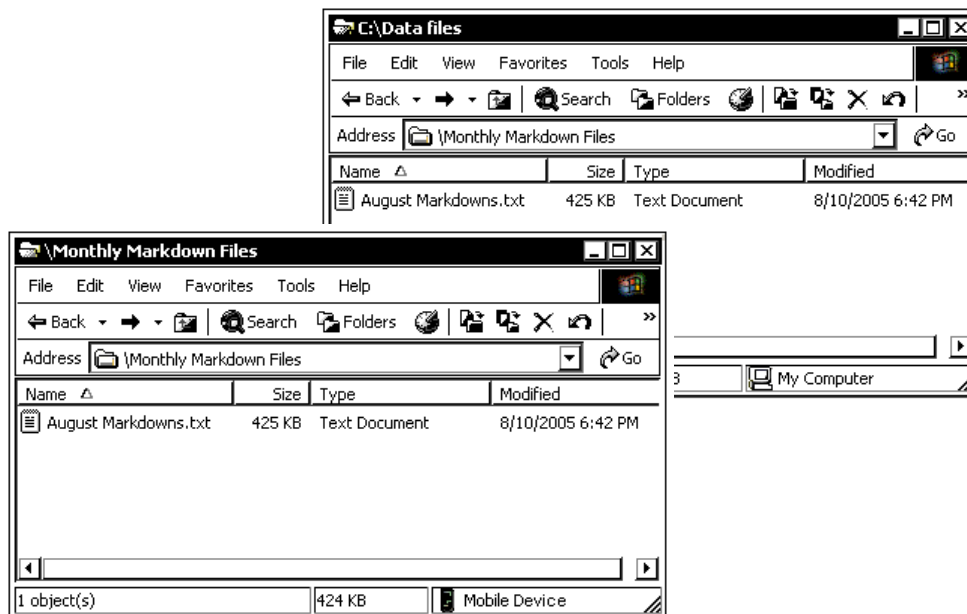
Transferring Files to the Printer

To transfer data files to the printer:

1. Open the folder with your data files on your computer.
2. Turn on the printer and wait thirty seconds for the desktop to load.

Note: For large file transfers, change the **Switch State to Suspend** setting on the printer to a longer delay time so the printer does not shut down during the transfer.

3. Connect the USB cable to your computer and printer.
4. Click **Explore** on the Microsoft ActiveSync utility after it connects to the printer. A new window appears called Mobile Device.



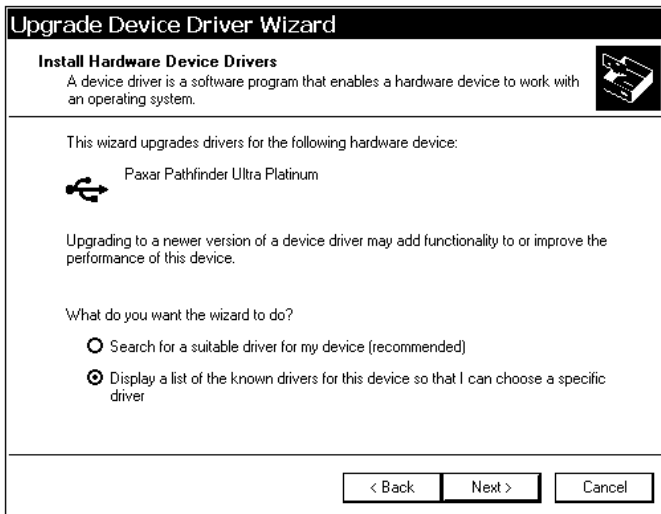
5. Open the destination folder for the data files on the Mobile Device (printer).
6. Drag the files from your computer to the Mobile Device folder.

Updating the USB driver for Microsoft® Windows® 2000

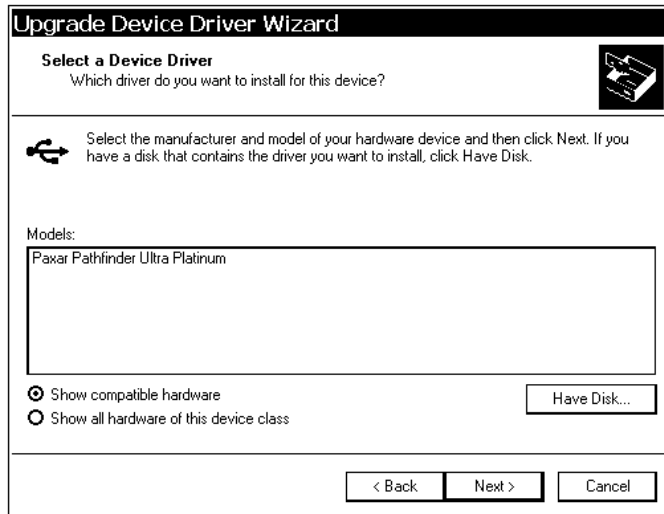
1. Turn on the printer and wait 30 seconds for the desktop to load.
2. Attach the USB cable to your computer and printer.
3. Select **System** from your **Control Panel**.
4. On the **Hardware** tab, click **Device Manager**.
5. Double click **Windows CE USB Devices**.
6. Right click **Paxar Pathfinder Ultra Platinum**, and select **Properties**.
7. Select the **Driver** tab and click **Update Driver...** You see



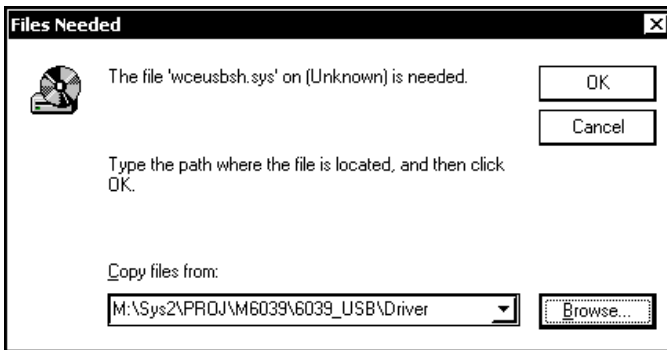
8. Click **Next**.



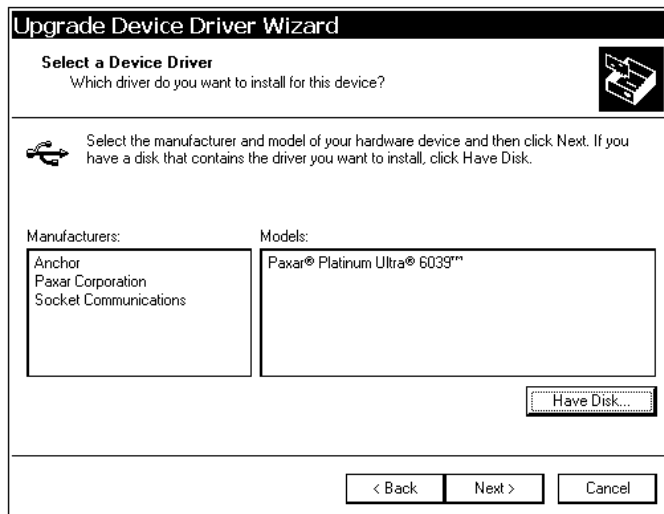
9. Select **Display a list of drivers for this device so that I can choose a specific driver** and click **Next**.



10. Select **Paxar Pathfinder Ultra Platinum** and click **Have Disk**.



11. Select **Browse** and click **OK** after selecting the updated driver.



12. Select **Paxar Corporation** and **Paxar Platinum Ultra 6039** and click **Next**.



13. Click **Next**.



14. Click **Finish**.

Updating the USB driver for Microsoft® Windows® XP

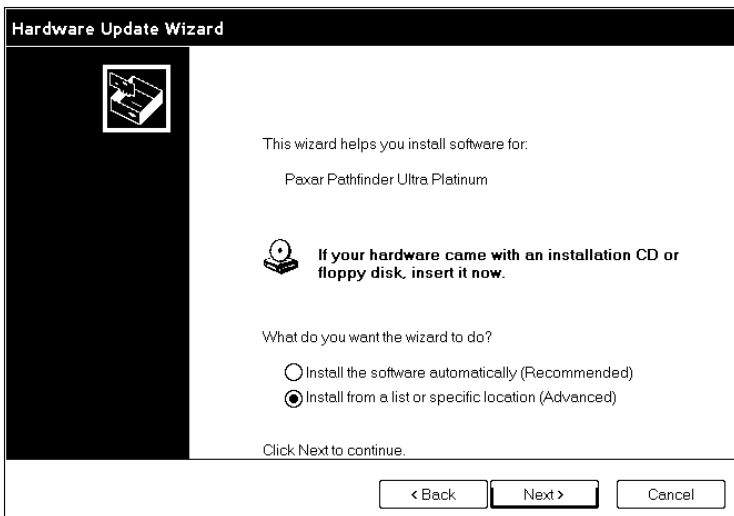
1. Turn on the printer and wait 30 seconds for the desktop to load.
2. Attach the USB cable to your computer and printer.

Note: If the ActiveSync Partnership dialog appears, click **Cancel**.

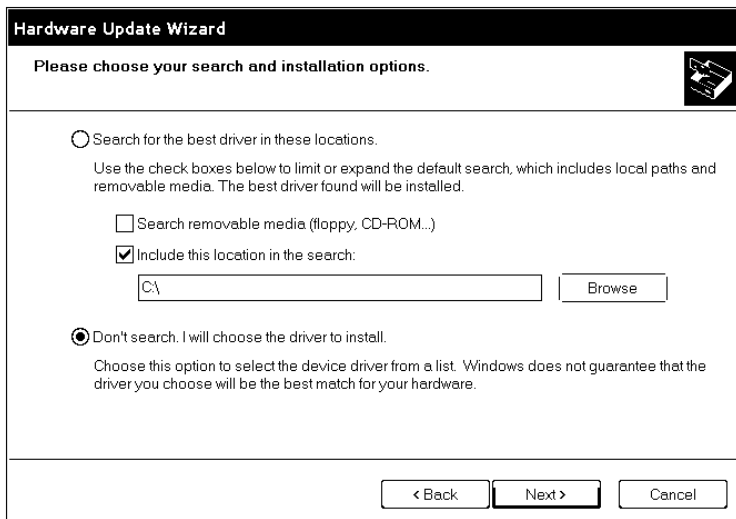
3. From the **Control Panel**, select **System**.
4. On the **Hardware** tab, click **Device Manager**.
5. Double click **Windows CE USB Devices**.
6. Right click **Paxar Platinum Ultra 6039** and select **Properties**.
7. Select the **Driver** tab and click **Update Driver...** You see



8. Select **No, not this time** and click **Next**.



9. Select **Install from a list or specific location (Advanced)** and click **Next**.

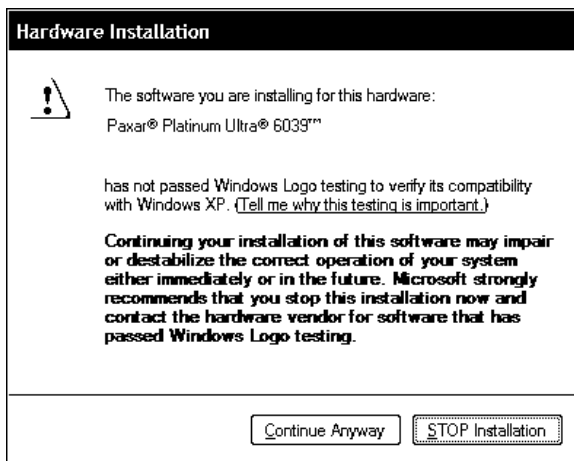


10. Select **Don't search, I will choose the driver to install** and click **Next**.

11. Click **Have Disk**.

12. Select **Browse**, select the updated driver and click **OK**.

13. Select **Paxar Platinum Ultra 6039** and click **Next**.



14. Click **Continue Anyway**.

15. Click **Finish**.

16. Close the Properties window, disconnect the USB cable from the printer, then click **Yes** to restart your computer.

