

# USB DRIVER INSTALLATION GUIDE

Use these instructions to install the USB and Microsoft® ActiveSync® synchronization software for your printer and computer to communicate. These instructions are written for Microsoft® Windows® 2000SP4/XP. You must have a USB port and the proper cable to connect the printer to your computer.

**Note:** Information in this document supercedes information in previous versions. Check our Web site (**[www.paxar.com](http://www.paxar.com)**) for any updates.

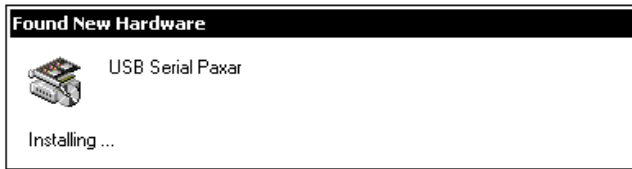
The USB driver is on the Monarch® Handheld Software Package CD-ROM, which came with your printer. You will need ActiveSync to transfer files between your printer and computer. The ActiveSync software is available on the Microsoft® Web site (Microsoft.com) by searching on ActiveSync.

## **Downloading the Latest Driver**

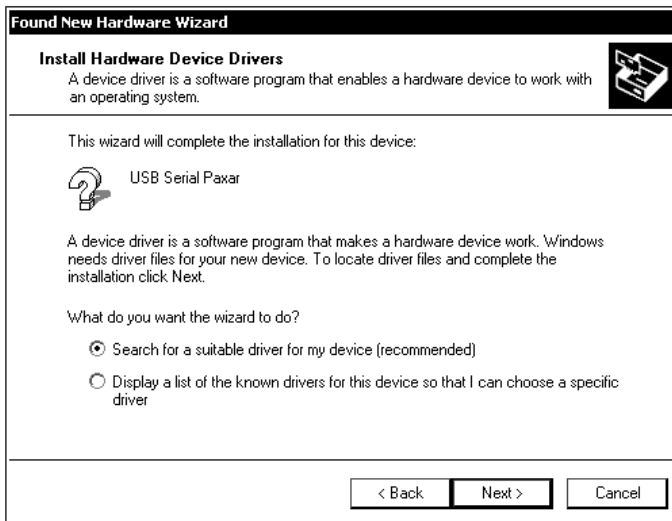
You can also download the latest USB driver from **[www.paxar.com](http://www.paxar.com)**. Once you extract and save the necessary files from the .zip file, follow the instructions for installing the USB driver. To update the driver, see “Updating the USB driver for Microsoft® Windows® 2000” and “Updating the USB driver for Microsoft® Windows® XP.”

## **Installing the USB driver for Microsoft® Windows® 2000**

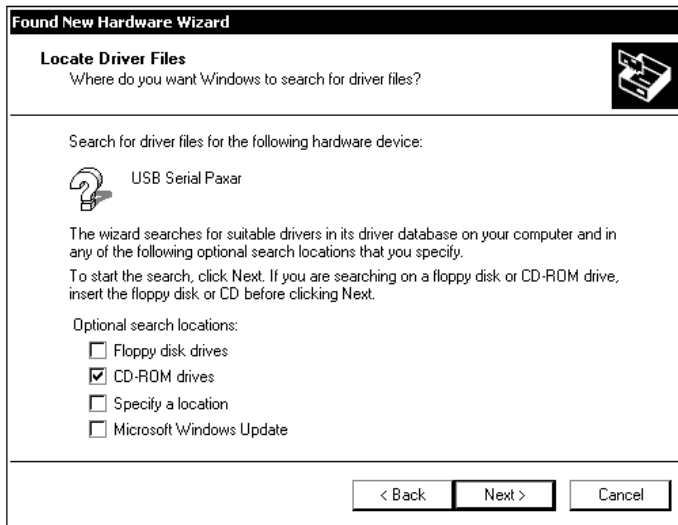
- 1.** Insert the CD in your CD-ROM drive.
- 2.** Turn on the printer and wait 30 seconds for the desktop to load.
- 3.** Attach the USB cable to your computer and printer. The computer automatically detects the USB port and launches the Found New Hardware Wizard.



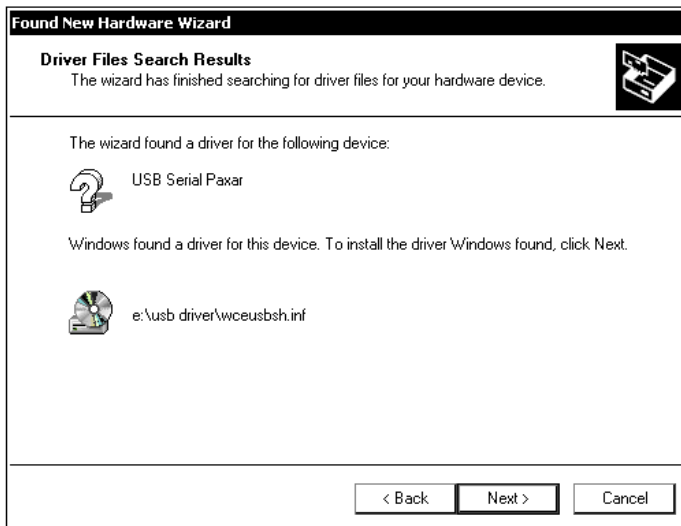
4. Click **Next**.



5. Select **Search for a suitable driver for my device (recommended)**. Click **Next**.



6. Select **CD-ROM drives** to install from the CD, or **Specify a location** if you downloaded the drivers from a Web site. Click **Next**.



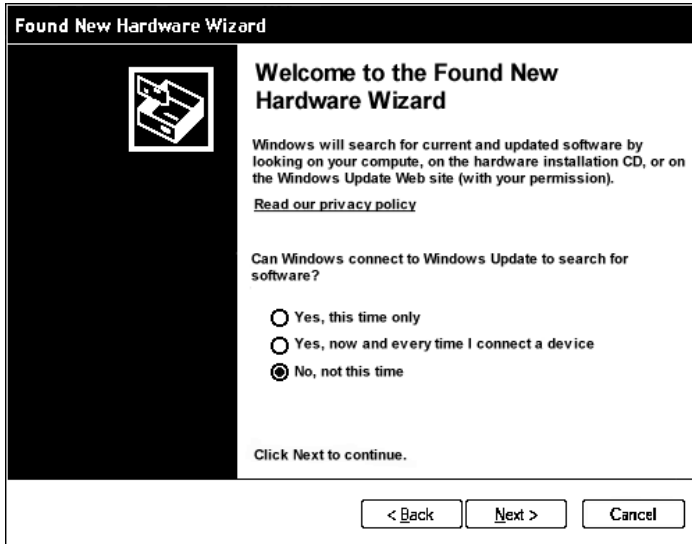
**7. Click Next.**



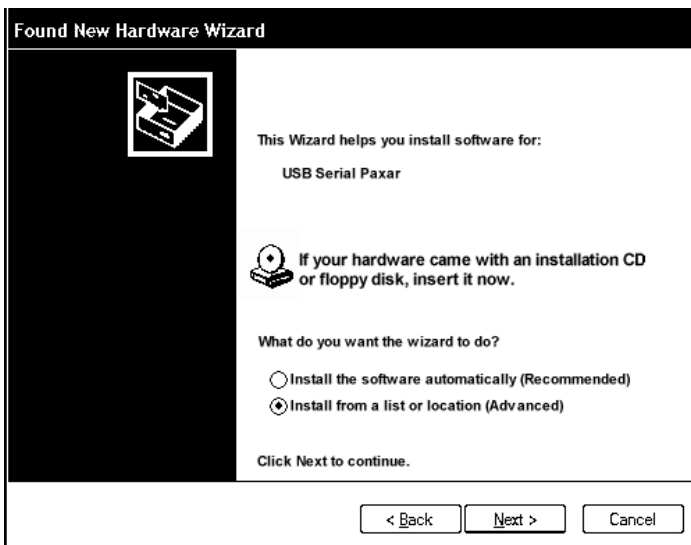
**8. Click Finish.**

## Installing the USB driver for Microsoft® Windows® XP

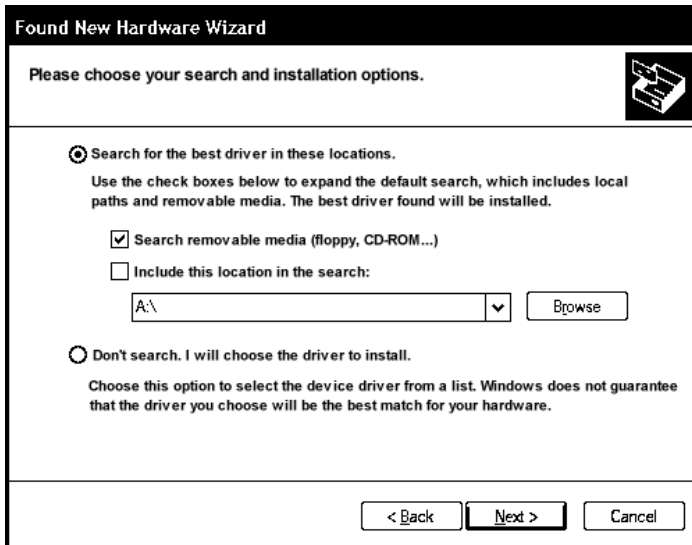
1. Insert the CD in to your CD-ROM drive.
2. Turn on the printer and wait 30 seconds for the desktop to load.
3. Attach the USB cable to your computer and printer. The computer automatically detects USB port and launches the Found New Hardware Wizard.



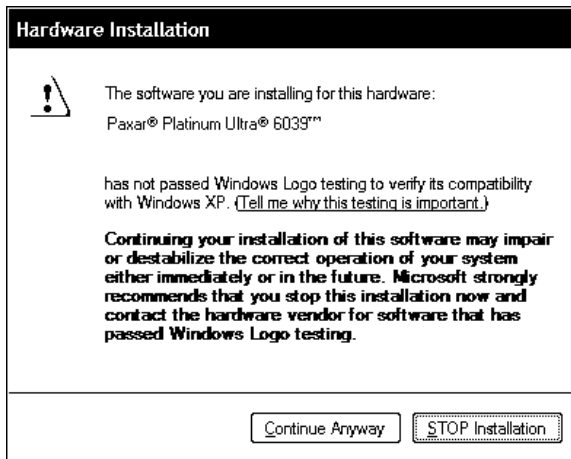
4. Select **No, not this time**, then click **Next**.



5. Select **Install from a list or specific location (advanced)**, then click **Next**.



6. Select only **Search removable media (floppy, CD-ROM)**, then click **Next** to continue through the installation by following the instructions on the screen.



7. Click **Continue Anyway**.

8. When the installation is complete, you see



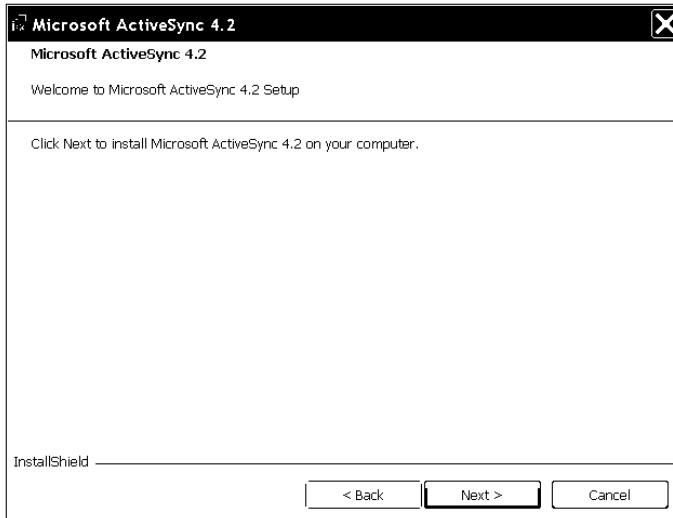
9. Click **Finish**.

## Installing Microsoft® ActiveSync® Synchronization Software

Download the ActiveSync synchronization software from the Microsoft.com Web site. Follow the download instructions on the site.

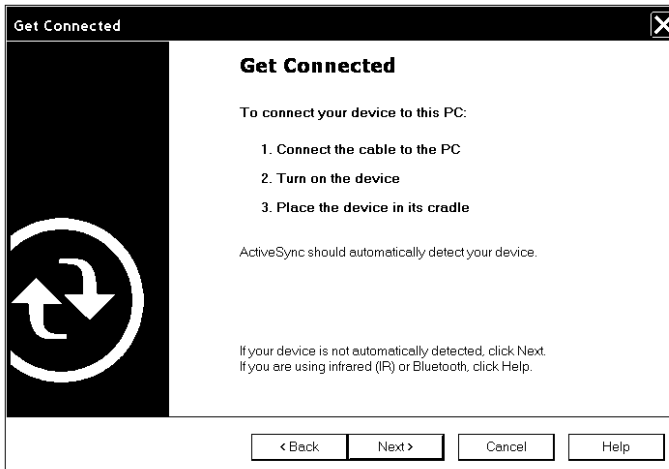
**Note:** To use ActiveSync with Linux® or similar operating system, you need the SynCE software. You can download it from **[synce.sourceforge.com](http://synce.sourceforge.com)**.

1. Double click the ActiveSync setup file to begin the installation.

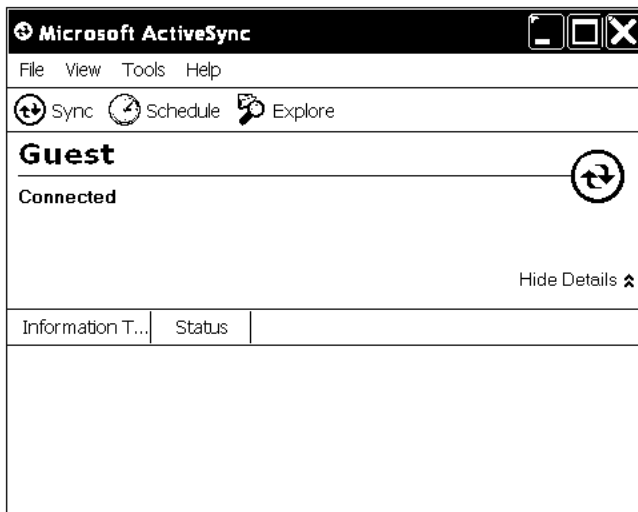




2. Click **Next** to begin the install and follow the instructions on the screen. When the installation is finished, you are prompted to restart your computer. After it restarts, you see



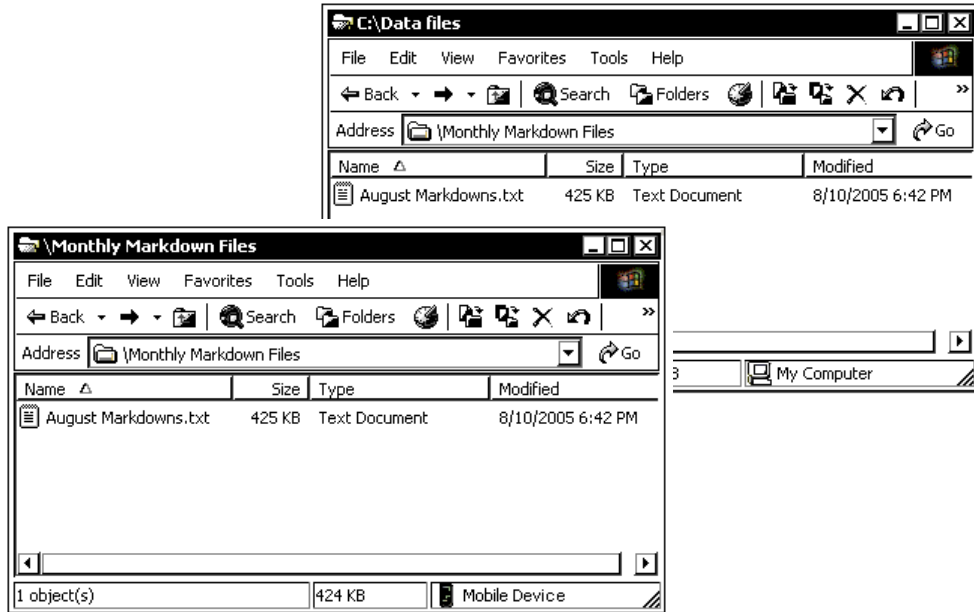
3. Turn the printer on, wait 30 seconds for the desktop to load, then connect the cable to your computer and printer.
4. Select Yes or No and install any needed components when prompted to set up a Partnership. Click **Next**.



## Transferring Files to the Printer

To transfer data files to the printer:

1. Open the folder with your data files on your computer.
2. Select the Mobile Device drive and open the folder for the data files on your printer.)
3. Drag the file from your computer folder to your Mobile Device folder.



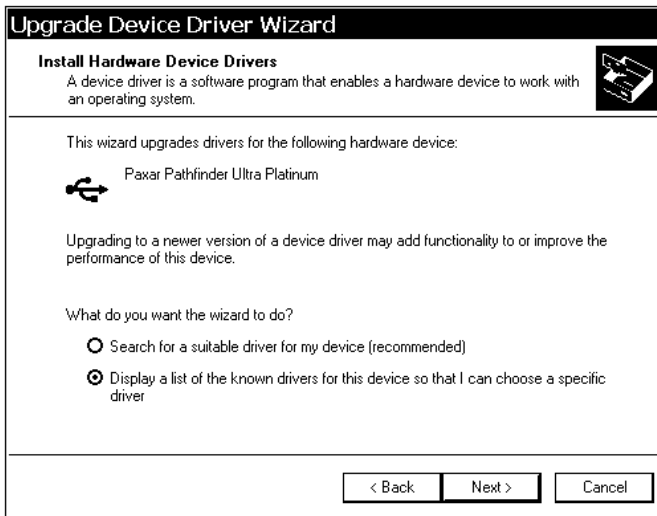
**Note:** For large file transfers, change the **Switch State to Suspend** setting on the printer to a longer delay time so the printer does not shut down during the transfer.

## Updating the USB driver for Microsoft® Windows® 2000

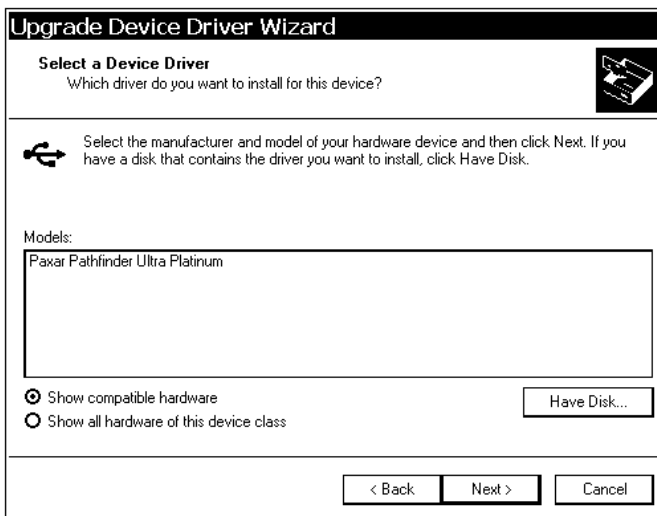
1. Turn on the printer and wait 30 seconds for the desktop to load.
2. Attach the USB cable to your computer and printer.
3. Select **System** from your **Control Panel**.
4. On the **Hardware** tab, click **Device Manager**.
5. Double click **Windows CE USB Devices**.
6. Right click **Paxar Pathfinder Ultra Platinum**, and select **Properties**.
7. Select the **Driver** tab and click **Update Driver...** You see



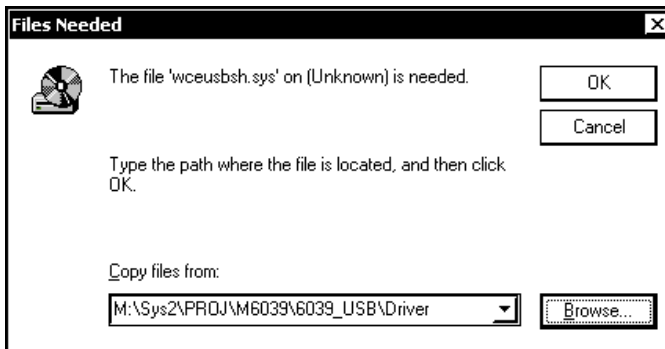
## 8. Click **Next**.



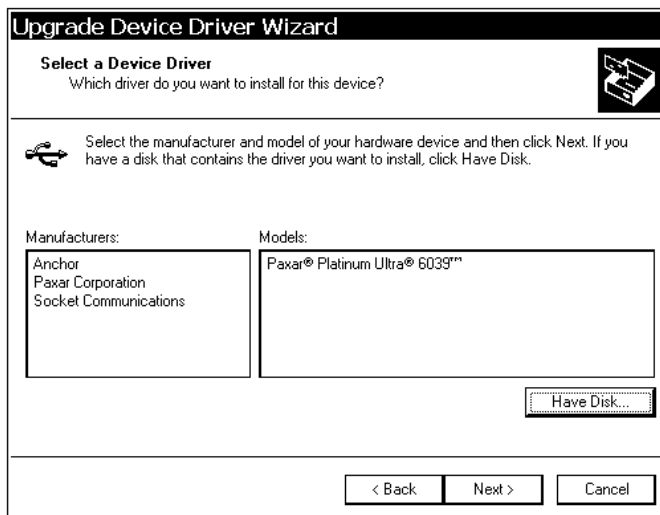
## 9. Select **Display a list of drivers for this device so that I can choose a specific driver** and click **Next**.



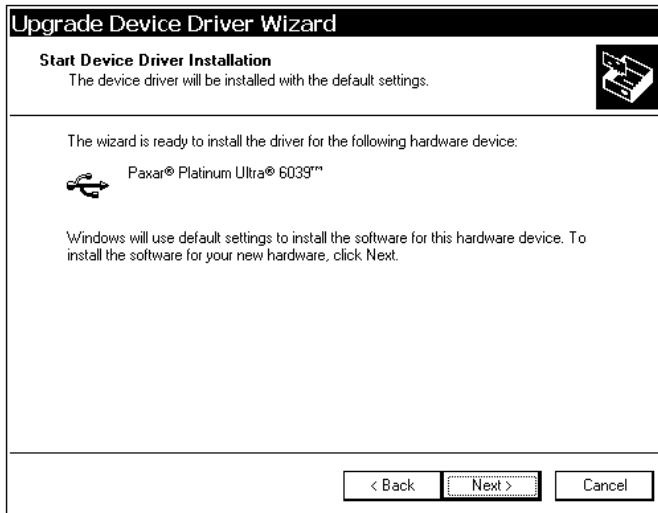
**10. Select Paxar Pathfinder Ultra Platinum and click Have Disk.**



**11. Select Browse and click OK after selecting the updated driver.**



**12. Select Paxar Corporation and Paxar Platinum Ultra 6039 and click Next.**



**13. Click Next.**



**14. Click Finish.**

## Updating the USB driver for Microsoft® Windows® XP

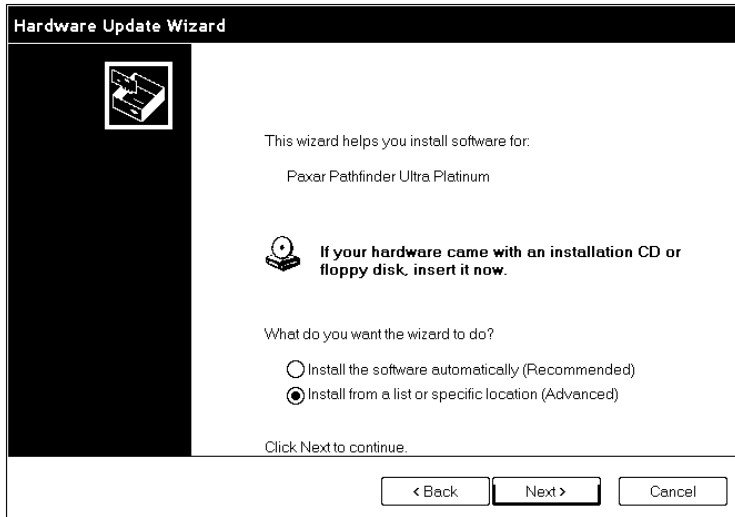
1. Turn on the printer and wait 30 seconds for the desktop to load.
2. Attach the USB cable to your computer and printer.

**Note:** If the ActiveSync Partnership dialog appears, click **Cancel**.

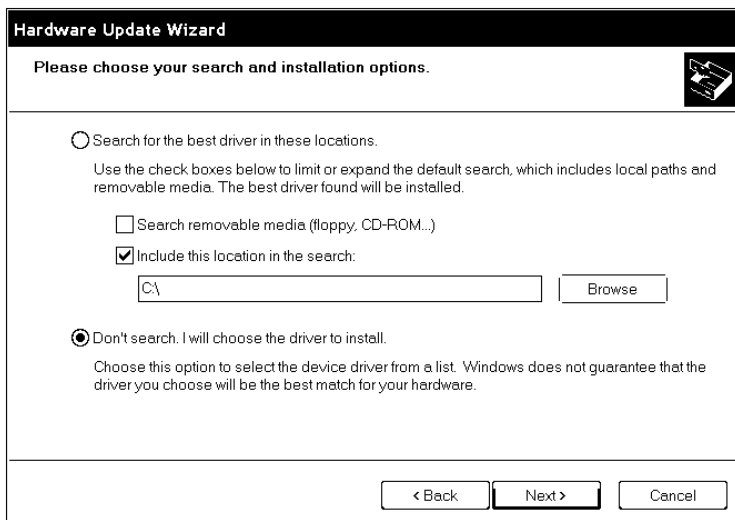
3. From the **Control Panel**, select **System**.
4. On the **Hardware** tab, click **Device Manager**.
5. Double click **Windows CE USB Devices**.
6. Right click **Paxar Platinum Ultra 6039** and select **Properties**.
7. Select the **Driver** tab and click **Update Driver...** You see



8. Select **No, not this time** and click **Next**.



9. Select **Install from a list or specific location (Advanced)** and click **Next**.



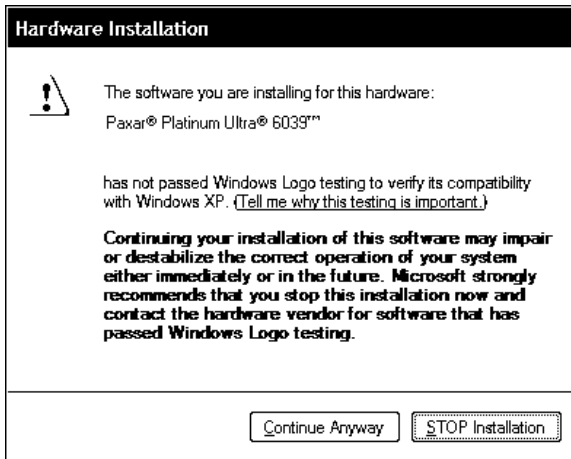
10. Select **Don't search, I will choose the driver to install** and click **Next**.

11. Click **Have Disk**.

12. Select **Browse**, select the updated driver and click **OK**.



**13. Select Paxar Platinum Ultra 6039 and click Next.**



**14. Click Continue Anyway.**



**15. Click Finish.**

**16. Close the Properties window, disconnect the USB cable from the printer, then click Yes to restart your computer.**

