

**Avery Dennison**  
Printer Solutions

**Freshmarx**  
Intelligent Food Industry Solutions

# Avery Dennison® Monarch® Pathfinder® 6059 with RFID for the Food Supply Chain



# Avery Dennison® Monarch® Pathfinder 6059 with RFID for the Food Supply Chain

---

Digital ID solutions such as RFID dramatically improve inventory management and enable foodservice providers to see exactly what's come in, how much product is in inventory, and when it leaves — with 98% accuracy.

RFID enables automation, quality assurance, and shelf life accuracy without compromise, to locate lost products, to redirect what needs to be redirected, and to withdraw only what needs withdrawing.

## RFID Labeling on Demand

The Avery Dennison Monarch Pathfinder 6059 with RFID is the only mobile one-piece solution that can encode and print RFID labels on demand. Now you can take RFID encoding and labeling right to the product.

- Empowers restaurants and stores to become 100% RFID enabled
- Scan a package, retrieve the routing information, encode RFID technology into the inlay of a label, and print the RFID-encoded label to apply to the package

- Encode cases and inner packs with source information that allows the food to be tracked and accounted for throughout the supply chain.
- Produce 2D barcodes that provide product details to the consumer
- Add RFID labels to products at the processor or distribution center as a value-added service or at restaurants or stores at receiving

## The future of food is here

By adding a unique identifier and online connectivity to every item in any inventory, RFID-enabled labels let grocers, restaurants, convenience stores, and food suppliers dramatically improve inventory management, efficiency, traceability, sustainability, and customer satisfaction.

# Specifications

## Operating System

Android Nougat (7.1.2)

## Dimensions

Height: 10.4" (264mm)

Width: 3.3" (84mm)

Depth: 7.9" (201mm)

Weight: 2.3 lbs (1.04 kg) (device with battery)

Shipping Weight: 5.9 lbs (2.6 kg)

## Printing Method

Thermal Direct

## Scanner

Integrated 2 Dimensional scanner

## Keypad/Display

Virtual keyboard on display. Three software controlled contextual keys, off/on, trigger, 1/2 VGA (320x480 pixel) VGA color graphics LCD with touchscreen.

## Memory

2GB DDR2 RAM

4GB NAND Flash

16GB SD Card

## Communications

802.11 a/b/g/n/ac dual band

Bluetooth 5.1

USB 2.0 HS port (Host, Device)

## Bar Code Types

UPCA +2/+5, UPCA+Price CD, UPCE +2/+5, EAN8 +2/+5, EAN13 +2/+5, EAN13+-Price CD, Interleaved 2 of 5, Interleaved 2 of 5 with Barrier Bar, Code 16K, Codabar (NW7), Code 128, Code 39, MSI, PDF417, Code 93, Postnet, Maxicode, QR Code, GS1 Databar, Data Matrix and RSS

## Standard Fonts

Std AOSP Fonts (Noto, Roboto, Droid)

## RFID Frequency Range

Supports FCC and ETSI frequency ranges

## Supplies

The printer supports butt cut, die cut and continuous supplies.

## Supply Types

Labels, tags and receipt paper

## Supply Sizes

Width: 1.2" up to 2.0" (28 mm to 51 mm)

Length: 0.55" to 8.0" (14 mm to 203 mm)

Supply Roll Lengths: 420" to 580" (10.7 to 14.7 meters)

Custom lengths are available

Minimum to apply length is: 0.785" (19mm)

## Supply Thickness

Tags: 7 mils (0.18 mm)

Labels: 6 mils (0.15mm)

Labels (RFID): 9 mils (0.23 mm)

Receipt Paper: 2.8 mils (0.07 mm)

Maximum Print Area

1.89" x 7.94" (48 mm x 201.7 mm)

## Sensing

Black mark only

Integrated on-demand sensor

## Environmental ranges

### Operating Temperature

41 to 104 F (5 to 40 C)

### Storage

-4 to 122 F (-20 to 50 C)

### Humidity/Operating and Storage

5% to 90% non-condensing

## Electrostatic Discharge and Air Quality

Some issues with electronic equipment may occur in environments prone to static discharge or extreme dust conditions. Avery Dennison suggests that you take precautions to minimize these issues.

## Other features

### Power Source

Monarch 7.4V Lithium Ion battery pack

### AVERAGE SCAN / LOOKUP / PRINT

500ms or less

### Paper Speed

up to 4 ips (127 mm/sec)

### Print Ratio

30% black maximum per square inch

### Inches per Charge

Up to 3,000" (76 meters) of 30% black printing on the supply. Factors such as scanning, RFID encoding, use of LAN radios and duty cycle can reduce inches printed per charge.

### Battery Cycle Life

Approximately 350 full discharge cycles. Many factors affect individual battery performance.

### Recommended Duty Cycle

33% duty cycle for continuous printing (5 minutes out of 15-minute time intervals). On demand or intermittent printing has no restrictions.

## Accessories

- Battery (part# 12009502)
- 9462™ Single Station Battery Charger
- 9465™ Four-Station Battery Charger
- USB Cable
- 6056 Single Station Charger / Communications Dock
- 6054 Network Controller / Power Supply for Docking Station
- 6055 Docking Station
- Petite Wrist Strap Kit (part# 130604)
- Shoulder Strap Kit (part# 130605)
- Deluxe Hand Strap Kit (part# 130606)



## Avery Dennison® Service and Support

Our technical specialists and service representatives can provide installation support, training and operating recommendations.

For more information call:  
800.543.6650, option 7.

## About Avery Dennison® Freshmarx® Solutions

The Freshmarx Central System is the latest in Avery Dennison's ever-expanding suite of Freshmarx Intelligent Food Industry Solutions for restaurant, grocery and convenience stores. By uniquely combining IoT devices, applications, labels and service in ways that digitize and automate data to solve challenges experienced throughout the food supply chain, Freshmarx Solutions enable food safety, labor efficiency, traceability and enhance the consumer experience.

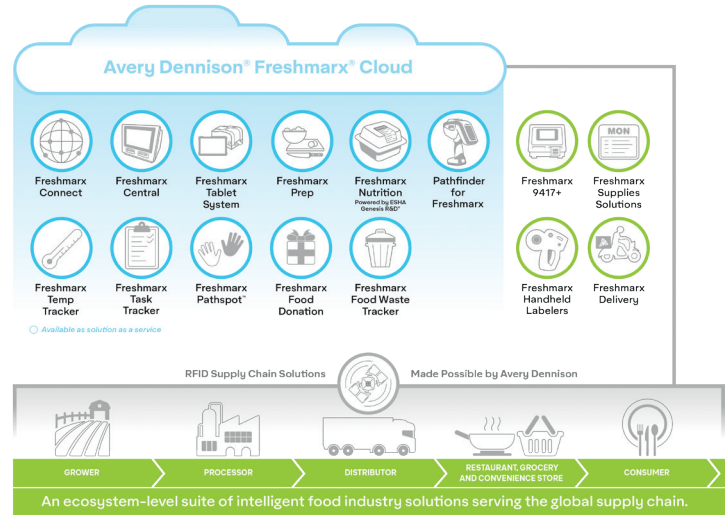
**Freshmarx® analysis, deployment and support**

Freshtrax Analysis

Freshmarx RFID Design and Deployment

Freshmarx Systems Integration

Freshmarx Service and Support



## Not sure where to start?

Determining the right Freshmarx Solution for your foodservice environment begins with a Freshmarx Freshtrax Analysis.

Freshtrax is a complimentary analysis program where our consultants review your operations and identify process improvements. Our experts partner with you to examine each step of your everyday processes and operations and work with you to create a plan to:

- Increase labor efficiency
- Enable traceability and transparency
- Ensure food safety
- Create processes that promote sustainability
- Enhance consumer experience

To request a Freshtrax analysis and explore how Freshmarx Solutions can improve your food service environment, email: [printersolutions@averydennison.com](mailto:printersolutions@averydennison.com) or call: 800.543.6650



**Harnessing the power of accurate, shared data throughout the food industry supply chain to enable labor efficiency, food safety, sustainability and enhance the consumer experience.**

The information contained herein is believed to be reliable but Avery Dennison makes no representations concerning the accuracy or correctness of the data. This product, like any other should be tested by the customer/user thoroughly under end user conditions to ensure the product meets the particular requirements. Independent results may vary. Avery Dennison and the logo are registered trademarks of Avery Dennison Corp. Third party trademarks and/or trade names used herein are the property of their respective owner(s).  
©2020 Avery Dennison Corporation, All Rights Reserved.

## Contact us

170 Monarch Lane, Miamisburg, OH 45342  
937 865 2123 (direct) Tel +800 543 6650 (8:00 a.m.–6:30 p.m., EDT)

[www.freshmarx.com](http://www.freshmarx.com)